



2009 POCKET BOOK

*Annual Stock Market
Performance*

© 2010 EYGM Limited. All Rights Reserved.



Boom, bust, boom?

In uncertain times, how you respond to market ups and downs could make all the difference. We can help you ride the storm. With assurance, advisory, tax and transaction advisory professionals across 140 countries, we can help you tackle market situations as they arise. This means, wherever you are, whatever the conditions, your business can achieve its full potential.

What's next for your business?
ey.com

 **ERNST & YOUNG**
Quality In Everything We Do



2009 POCKET BOOK

*Annual Stock Market
Performance*

Always true to you



Because we know what's important in your life.


We think the world of you.  GraceKennedy

Table Of Contents

Preface	4
JSE - At the heart of the regional financial markets	5
Trading Holidays	10

STOCK MARKET REVIEW

Stock Market Review For 2009	12
Financial Year End and Dues Dates	18
Composition Of Indices	19
Quarterly Market Capitalization	20
Quarterly Issued Shares & Par Values	24
Month-End Stock Prices	26
Monthly Ordinary Transactions	28
Monthly Block Transactions	29
Monthly Trading Volumes	30
Monthly Trading Values	34
Monthly High/Low Stock Prices	38
Maximum and Minimum Indices	41
Corporate Data	42
Daily Index and Trend Line	44
Dividend Payment for 2009	45
Average Daily Volume, Value & Trades	51
Monthly Trades Per Company	52
Top Twenty Price Appreciation	55
JSE Month-End Index	57

OUR SERVICES

The JCSD Registrar Services Unit	59
Jamaica Stock Exchange's Regulatory & Market Oversight Division	
2009 Market Oversight Report	61
Company Listing Fees and Trading Charges	64
Our Stockbrokers	67
Index to Advertisers	69

Preface

We have published the sixth edition of the Jamaica Stock Exchange's Pocket Book at a very exciting time in world history. We are at the tail end of the global recession, which has affected most economies and by extension, the capital markets around the world since 2008.

In Jamaica a major action emanating from the global turmoil is the signal by the government to implement the Jamaica Debt Exchange (JDX) as they take steps to stabilize the economy towards the end of 2009. This process is expected to culminate in the first quarter of 2010. In light of this action by the government the prospect for the Capital Market is looking very good. As interest rates trend down, undoubtedly, investors will be looking for opportunities. The Capital Market will be very attractive in the ensuing year, as historically it is one of the few avenues that have consistently shown very good returns over the long run. Now with the addition of the Junior Market, the attractiveness of the Capital Market will be greatly boosted. Consequently, the Stock Exchange feels compelled to provide all stakeholders with information at their finger tips in order to allow investors and potential investors to make informed decision critical to their financial health.

It is therefore with a sense of pride, that the Jamaica Stock Exchange presents this 7" x 4" hand book comprised of a compendium of facts, figures, charts and other illustrations about the performance of the Jamaican stock market during 2009. This type of historic data will indeed assist investors with current and comparative information and also to act as a very good reference material for researchers, students, analysts, financial planners, managers and educators who need to keep abreast of the market.

You can also find an easy to read copy of the Pocket Book on our website at www.jamstockex.com.

The publication of this book would not be possible without the encouragement of the JSE's Chairman - Curtis Martin, General Manager - Marlene Street Forrest and our Deputy General Manager - Robin Levy.

We thank all the members of staff for their support with this publication. We would specially like to acknowledge the team behind this invaluable production, namely, Riccalya Robb and Robyn Kay Deleon of the JSE's Market Operations Department, who carefully prepared the data; Davia Eastman, Charlette Nugent and Michael Johnson who provided the advertising and editorial co-ordination and support.

To all our advertisers who have stuck with us over the years and our first time advertiser we say "thank you" again for making this publication possible.

The Jamaica Stock Exchange: At the heart of Regional Financial Markets



A Stock Market is an important part of our daily lives and modern economies. Making sure we are financially secure is a vital part of how our economy grows. And investing in securities is often a significant component of an investor's portfolio.

Owning stocks means you own a slice of a public company. The companies listed on the Exchange are local, regional and global and form the core of our private enterprise system. They spur job creation and economic growth while creating products and providing services that improve our quality of life.

The Jamaica Stock Market is a vital link between companies needing capital and Jamaicans with money to invest. When a company needs to raise money to expand, it sells stocks or bonds to the public through the financial markets. Individuals become investors in this company by purchasing those securities. As investors and part-owners in companies of their choice, they are able to participate in the companies' growth and development. In turn, companies which raise capital from the sale of shares are able to expand.

This helps to increase employment both directly and indirectly as more raw materials and services are bought and additional suppliers and contractors are hired. The increased economic activity helps to increase production and strengthen the country's economy as a whole.

The number of Jamaicans who own stocks through individual investments or through unit trusts is growing. And many more participate in the stock market through investments in retirement funds, insurance companies and banks.

Owning stock allows investors, large and small, to share in the world's economic growth and, vitality. Central to this activity is the Jamaica Stock Exchange (JSE), where billions of dollars worth of stocks change hands annually. The JSE plays a unique role in providing companies who list their securities on the Exchange with a liquid market for the trading of those securities; benefiting all investors.



WHAT ARE THE BASIC FUNCTIONS OF THE STOCK EXCHANGE?

- a. To provide an additional channel for encouraging and mobilizing domestic savings
- b. To foster the growth of the domestic financial services sector
- c. To provide savers with greater opportunities to protect themselves against inflation.
- d. To increase the overall efficiency of investment
- e. To facilitate privatization.
- f. To improve the gearing of the domestic corporate sector and help reduce corporate dependence on borrowing.

HOW DID THE CONCEPT OF A STOCK MARKET DEVELOP?

The institutional beginning of stock exchanges appeared during the 12th century in Paris spreading to the great trading centres of the world-Amsterdam, Great Britain, Denmark, Germany and France during the 16th and 17th centuries. The growth of trade created a need for banks and insurance companies. A combination of expanding activity and intermittent capital shortage stimulated the early issuers of securities: governments, banks, insurance companies and some joint stock enterprises, particularly the great trading companies.

From the existing exchanges of commercial bills and notes it was an easy transition to the establishment of stock exchanges for securities. By the early 1600's shares of the Dutch East India Company were being traded in Amsterdam and in 1773 London Stock Dealers moved into their own building. By the 19th century, trading in securities on a formal basis was common in industrial nations. Today, trading is conducted on over 120 stock markets worldwide.



WHAT IS A STOCK EXCHANGE?

A stock exchange is simply a marketplace where securities, that is, shares, stocks or bonds are bought and sold quickly, efficiently and under strict regulations for the protection of investors.

HOW DID THE JAMAICA STOCK EXCHANGE BEGIN?

Before the Jamaica Stock Exchange began, Jamaicans would buy and sell shares of corporations and companies through banks, lawyers and other individuals. The Kingston Stock Market was established in 1961 under the guidance of the Bank of Jamaica, to co-ordinate the activities of traders, or persons who bought and sold shares on behalf of individuals. The Jamaica Stock Exchange itself, began operations in February 1969 with one of its roles being to promote the development of a vibrant capital market and to ensure orderly trading in listed securities, that is stocks, shares or bonds that are traded on a stock exchange. The first official trade on the Jamaica Stock Exchange took place on Monday, February 3, 1969.

IS THE JAMAICA STOCK EXCHANGE A GOVERNMENT ENTITY?

No. The Jamaica Stock Exchange is a public limited liability company. The Bank of Jamaica was very active in the formation of the Stock Exchange and had taken part in all the pre-incorporation discussions and negotiations. In the past the Central Bank provided operating personnel for the Jamaica Stock Exchange, which was accommodated at rented premises in the B.O.J. However, over the years the role of the B.O.J. has deliberately decreased and today the Jamaica Stock Exchange occupies its own building at 40 Harbour Street, Kingston and operates with its own personnel.

WHAT IS THE STRUCTURE OF THE JAMAICA STOCK EXCHANGE?

The JSE is a demutualized Exchange and is governed by a Board of Directors which is comprised of independent and non-independent directors. Independent members can be drawn from the Bank of Jamaica, Ministry of Finance & Planning, Institute of Chartered Accountants of Jamaica, Private Sector Organization of Jamaica, the Jamaican Bar Association or any other organization which can provide relevant input to the deliberations of the Board.

The Chairman and Deputy Chairman are elected by the Board annually. The General Manager/Secretary is in charge of the day to day operations of the Jamaica Stock Exchange.

WHAT IS THE ROLE OF THE BOARD OF THE STOCK EXCHANGE?

The Board of Directors is a self regulatory body that monitors the activities of the stock market. The Board's functions include:

Setting guidelines and rules of operations at the Exchange.

To ensure that the stock market and its member dealers operate at the highest possible standard.

To determine the shares to be listed on the Exchange.

To suspend from trading or de-list, companies which violate the rules of the Exchange.

The decisions of the Board are arrived at on the basis of a majority vote.



DO ALL JAMAICAN COMPANIES HAVE SHARES TRADED ON THE JAMAICA STOCK EXCHANGE?

No. On any Exchange, only the stocks of those public companies that are listed are traded. That means a company must apply to the Jamaica Stock Exchange and be approved to have its shares traded. A company considering listing on the Jamaica Stock Exchange must meet the Exchange's listing requirements which include a minimum level of capitalization and the submission of detailed financial reports.

Jamaica Stock Exchange has listings from Jamaica and within the Caricom and we attract a wide range of companies. To be considered for a JSE listing, companies must meet strict financial and regulatory criteria. Companies list as initial public offerings (IPOs), by Introduction, Offer by Tender, Offer For Sale or by Placement.

HOW ARE SHARES TRADED?

The Jamaica Stock Exchange operates like other stock markets in the world. You choose a stockbroker, decide on a stock and place your order to buy or sell with your broker. Once this is done, your broker will purchase or sell your shares. The trade is complete when the trade that is placed by a buying broker on the electronic trading platform matches the trade placed by a selling broker where the price matches.

WHAT MAKES THE PRICE OF SHARES GO UP AND DOWN ON THE STOCK MARKET?

Shares prices are determined by supply and demand and on the confidence investors have in their value. If there are more orders to buy a share than offers to sell, the price will go up. If there are more offers to sell than to buy the price will go down. The decision to buy or sell depends on the investor's overall opinion as to the future prospects of a company's shares. This opinion is formed and influenced by factors such as the company's growth prospects; the type of industry, individual and corporate taxes and capital market conditions.

WHEN DOES TRADING TAKE PLACE ON THE JAMAICA STOCK EXCHANGE?

Trading on the Jamaica Stock Exchange is conducted on Monday to Friday between 9:30 a.m. and 1:30 p.m. through an electronic trading platform which was introduced in 2000.



WHAT IS THE JAMAICA CENTRAL SECURITIES DEPOSITORY ?

In 1998 the JCSD, a wholly owned subsidiary of the Jamaica Stock Exchange was established. It is a facility for holding securities which enables share transactions to be processed by book entry.

A book entry system is an accounting system which facilitates the change of ownership of securities electronically between parties without the need for movement of physical documents.

JSE TRADING HOLIDAYS

Trading Holidays for 2009

January 1, 2009, New Year's Day
February 25, 2009, Ash Wednesday
April 10, 2009, Good Friday
April 13, 2009, Easter Monday
May 25, 2009, Labour Day
August 1, Emancipation Day
August 6, 2009, Independence Day
October 19, 2009, Heroes Day
December 25, 2009, Christmas Day
December 26, Boxing Day

Trading Holidays for 2010

January 1, 2010, New Year's Day
February 17, 2010, Ash Wednesday
April 2, 2010, Good Friday
April 5, 2010, Easter Monday
May 24, 2010, Labour Day
August 2, 2010, Emancipation Day
August 6, 2010, Independence Day
October 18, 2010, Heroes Day
December 25, Christmas Day
December 27, 2010, Boxing Day

FGFS Wins

JSE "Best Practices" Award



Excellence is an art perfected by consistent and unwavering effort.

Our fine team of professionals continue to inspire confidence among our customers and stakeholders.

As proud recipients of the Jamaica Stock Exchange's recent
"Best Practices"

Award in the category *Investor Relations - Stockbrokerage*,

we salute our team who, through their commitment and integrity, continue to perfect the art of excellence.



Your Investment Place from **GraceKennedy**

Toll Free: 1-888-246-6378

Website: www.fgfs.com • E-mail: fgfs@gkco.com

STOCK MARKET REVIEW FOR 2009

Economic Overview

The year 2009 brought about many interesting stories as economies struggled to recuperate, investors seek good returns within a hostile environment and governments shuffling to put in place the best monetary policies to strengthen currency and stabilize growth. There were many highlights for the Jamaican economy during 2009; the government in discussion for the International Monetary Fund to lend US\$1.25 billion; the Bank of Jamaica's governor Derick Latibeaudiere and police chief, Hardley Lewin resign; the reform of the country's budget and three tax packages for the calendar year in an effort to minimize government spending and absorbing revenues to cover government expenditure; global bond ratings being slashed by Standard & Poor and Moody's Credit Rating agencies; unemployment rate skyrocketed due to companies moving to restructure their organizational charts to operate more efficiently.

During the third quarter period ended September 2009, the central bank continued to decrease interest rates on open market instruments in an effort to continue on the path in achieving a stabilized exchange rate, a strong net international reserve account and positive trends in inflation rate. Streamlining towards the year end, the exchange rate was relatively stable as there was a fair increase of \$9.1346 or 11.35 percent to close the year at \$89.6059; net international reserves slightly declined by US\$36.59 million, closing with US\$1,736.35 million when compared to 2008 and the inflation rate for the calendar year closed with 10.2 percent, a decrease of 6.6 percent when compared to the 16.8 percent recorded in 2008.

Indices

The trading year started out with values of the JSE Main Index, All Jamaican Composite Index and the JSE Select Index being 80,152.02 points, 73,994.96 points and 1,984.74 points, respectively. However, the JSE Main Index advanced by 3,169.94 points or 3.95% to close at 83,321.96 points whilst the JSE Select Index and the All Jamaican Composite Index declined. The JSE Select Index fell by 88.69 points or 4.47% to close at 1,896.05 points and the All Jamaican Composite Index declined by 2,999.16 points or 4.05%, closing at 70,995.77 points.

During the one year period, the JSE Cross Listed Index and JSE Junior Market Index were introduced on February 2, 2009 and March 2, 2009, respectively. The latter, however, did not become active until October 30, 2009 due to the first company of the junior market being listed on that date. The Cross Listed Index declined by 37.08 points or 3.71%, closing at 962.92 points whilst the Junior Market Index advanced by 50.01 points or 50.01% to close at 150.01 points.

The period under review indicates that the three main indices recorded their highest value in January 2009; such values of JSE Index, All Jamaican Composite Index and the JSE Select Index were 87,501.69 points, 76,296.00 points and 2,084.99 points, respectively. It was however noted that the lowest values of the JSE Index and All Jamaican Composite Index were recorded in April 2009 with values 78,482.98 points and 60,952.64 points, respectively, whilst the JSE Select Index recorded its lowest value in March 2009 with 1,630.03 points. The Cross Listed Index maintained its highest value of 1,000 points during February 2 and March 6, 2009 and recorded its lowest value of 887.63 points in November 2009. The Junior Market Index' lowest value is the same as its opening value due to continuous increases since it commenced at 100 points, whilst its highest value closed the year with 150.01 points.

The JSE Index registered its highest one day loss by 2,596.47 points, with a percentage of 3.09% on November 18, 2009. The JSE Index achieved its highest one day appreciation of 3.64%, increasing by 2,949 points on November 23, 2009. In reference to the monthly changes, the JSE Index suffered its greatest loss in March with a decline of 4,068.80 points or 4.90% and in January the index had appreciated by 7,054.87 points or 8.80%.

The All Jamaican Composite Index recorded its highest one day percentage increase of 3.77% or 2,484.49 points on November 9, 2009. The index' largest one day percentage declined by 6.14% on February 11, 2009, with a difference of 4,469.82 points. On a monthly basis the index achieved its highest increase in May, by 6,110.14 points or 9.75%. The All Jamaican Composite Index however suffered its highest monthly decline of 7,626.83 points or 10.07% as at the end of February.

The JSE Select Index recorded its highest one day percentage loss by 7.43% on February 11, 2009, a difference of 145.13 points when compared to the previous trade day. The Index however attained its highest one day percentage increase of 4.59%, on November 9, 2009, reflecting an increase of 83.06 points. The JSE Select index gained 179.18 points or 10.54% at the end of May, indicating the highest monthly appreciation, whilst at the end of March the Index suffered its greatest monthly decline of 227.03 points or 12.19%.

The newly introduced Cross Listed Index recorded its highest one day loss of 90.79 points or 9.28% on November 18, 2009 and highest one day appreciation of 74.97 points or 8.45% within the same month, which was on November 23, 2009. Since its inception the Cross Listed Index experienced its highest monthly decline of 18.02 points or 1.83% in June 2009 and recorded its highest one month appreciation in August with 12.85 points or 1.35%.

The Junior Market Index two months activity indicates that December 2009 was the higher monthly increment of 24.60 points or 19.61% when compared to the previous month, November 2009.

Trading Activity

For the one year period trading activity in regards to trading volume, value and transactions all declined significantly due to the down turn been experienced in economy over the past years, as well as increases in interest rates and government papers. The total trading volume for ordinary transactions declined by 14,283 or 47.11% when compared to the 2008 corresponding period, recording a total of only 16,029 number of transactions. During the 253 days trading period 1.66 billion ordinary units valued at \$11.51 billion traded indicating a decline by 0.63 billion units or 27.60% in volume and \$12.87 billion or 52.77% in value when compared to the one year period ended December 2008.

As at December 31, 2009, the total volume traded in the block market amounted to 102.74 million units pulling from 70 block transactions valued at \$12.19 billion. The average daily volume and value for the period under review was 6.57 million and \$45.51 million, respectively, indicating reductions in the average daily volume and value of 2.61 million or 28.43% and \$52.00 million or 53.33% when compared to the corresponding period in 2008.

On March 2, 2009 the closing price method was changed to a weighted average price method in an effort to reduce the manipulation of stock prices in the market. The Weighted Average Price (WAP) is a measure of the price at which all the day's trading in a given security took place. WAP is calculated by taking the weighted average of the prices of each trade.

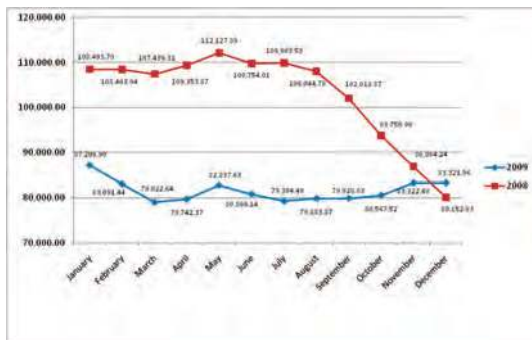
The advanced/ decline ratio, a method used to determine the movement in prices of listed companies, depicts bearish performances during the one year trading period as 18 companies appreciated in prices and 19 decreased. When compared to the 2008 corresponding period, 10 more companies had appreciated in prices whilst 11 had depreciated as at the end of December 2009.

Of the eighteen stocks that experienced price appreciation, only one company experienced appreciation of 100%, whilst two companies experienced increases of over 50%. These companies were Ciboney Limited, which advanced by 100%, Jamaica Broilers Group Limited which advanced by 55.00% and Pan Caribbean Financial Services by 50.83%. The other advancers and top decliners for the year ended December 31, 2009 are stated in table 1.

Volume leaders for the year were: Supreme Ventures Limited with over 651 million units traded, valued at \$1.47 billion, National Commercial Bank Jamaica Limited traded over 230 million shares valued at \$3.25 billion and Pan Caribbean Financial Services Limited with over 186 million units traded with a value of \$2.63 billion.

All three stocks above represent the top leaders in reference to the companies with the highest traded value.

JSE Monthend Index Values for the one year period ended December 31, 2008 & 2009



Top 10 Winners & Losers for the year ended December 31, 2009

The table below shows the top ten winners and losers change in percentage by price movement for the year ended December 31, 2009.

Winners		Losers	
Ciboney Group	100.00%	Hardware & Lumber	(65.00%)
Jamaica Broilers Group	55.00%	Jamaica Money Market Brokers	(45.58%)
Pan Caribbean Financial Services	50.83%	Berger Paints (Jamaica)	(40.00%)
Pan Jamaican Investment Trust	44.00%	First Caribbean Intl Bank Jamaica	(39.52%)
Sagikor Life Jamaica	25.36%	Kingston Wharves	(35.83%)
Montego Freeport	22.58%	Lascelles, deMercado & Co	(34.73%)
Salada Foods Jamaica	19.23%	Radio Jamaica	(33.00%)
First Caribbean International Bank	17.94%	Gleaner Company	(32.95%)
Pegasus Hotel	17.59%	Cable & Wireless (Jamaica)	(24.00%)
Jamaica Producers Group	12.57%	Mobay Ice Company	(21.65%)

Market Developments for the year ended December 31, 2009

The Cross Listed Index was introduced on February 2, 2009 which tracks the performance of the four cross listed companies listed on the JSE, those stocks that originated from either the Barbados Stock Exchange & Trinidad Stock Exchange. These companies include FirstCaribbean International Bank, Guardian Holdings Limited, Sagikor Financial Corporation and Trinidad Cement Limited. Sagikor Financial Corporation was later delisted and is no longer included in the calculation of the cross listed index.

The Junior Market was launched on April 2, 2009 but there were no companies listed at the time of the launch. Access Financial Services Limited was the first Junior Market listing on October 30, 2009. The JSE continues to work with those small and medium size businesses that wish to be listed. The JSE has joined up with Jamaica Trade & Invest Limited to assist these companies in an effort to shape their organizational, financial and transparency framework to satisfy the listing requirements.

Barita Investments Limited has applied for listing on the regular market with a combined share offer of 100,000,000 Series A Redeemable Cumulative Variable Rate Preference Shares, 100,000,000 Series B Convertible Cumulative Variable Rate Preference Shares and 200,000,000 Ordinary Shares. The IPO was opened on December 7 and closed on December 15. The public participated by taking up 99.99% of the Series A Redeemable Cumulative Variable Rate Preference Shares, 4.54% of the Series B Convertible Cumulative Variable Rate Preference Shares and 19.63% of the Ordinary Shares. The Offers raised a total of \$407,241,200. Listing will take place at the beginning of the next year.

Goodyear Jamaica Limited was delisted on July 20, 2009 after being suspended on December 22, 2008 due to the company participating in a winding up process. Sagicor Financial Corporation delisted on September 16, 2009 due to low trading activity in the company's shares.

WE'RE HELPING TO BUILD A BETTER NATION

Our new plant will produce cement to a
global standard, in greater quantities and
at a lower cost than ever before.

This means more competitive exports that
will earn Jamaica bucket loads of hard currency.

We will export products not jobs.

That's Carib Cement's commitment, what's yours?



MORE THAN JUST CEMENT

ONE CARIBBEAN...
ONE COMPANY
Jamaica Cement Company Limited

Listed Companies' Year End and Due Dates

Company	Financial Year-End	Due Date Audited for Results
BANK OF NOVA SCOTIA	31-Oct.	31-Jan
BERGER PAINTS LTD+	31-Mar	30-Jun.
CABLE & WIRELESS (JA.) LTD.	31-Mar.	30-Jun.
CAPITAL & CREDIT FINANCIAL GROUP	31-Dec	31-Mar
CAPITAL & CREDIT MERCHANT BANK	31-Dec.	31-Mar.
CARIBBEAN CEMENT CO.	31-Dec	31-Mar
CARLTON SAVANNAH REIT (JA.) LTD	31-Dec	31-Mar
CARRERAS LIMITED	31-Mar.	30-Jun.
CIBONEY GROUP LTD	31 -May	31-Aug.
DESNOES & GEDDES	30-Jun.	30-Sep.
FIRST CARIBBEAN INTERNATIONAL BANK	31-Oct.	31-Jan.
FIRST CARIBBEAN INTER. BANK JAMAICA	31-Oct.	31-Jan.
FIRST JAMAICA INVESTMENTS LTD.	31-Dec.	31-Mar.
GLENER COMPANY	31-Dec.	31-Mar.
GOODYEAR JAMAICA	31-Dec.	31-Mar.
GRACEKENNEDY LTD.	31-Dec.	31-Mar.
GUARDIAN HOLDINGS LTD.	31-Dec	31-Mar.
HARDWARE & LUMBER	31-Dec.	31-Mar.
JAMAICA BROILERS GROUP	30-Apr.	31-Jul.
JAMAICA LIVESTOCK ASSOCIATION	30-Nov.	28-Feb.
JAMAICA MONEY MARKET BROKERS LTD	31-Mar.	30-Jun.
JAMAICA PUBLIC SERVICE CO.	31-Dec	31-Mar
JAMAICA STOCK EXCHANGE	31-Dec	31-Mar
JAMAICA PRODUCERS GROUP	31-Dec.	31-Mar.
KINGSTON WHARVES	31-Dec.	31-Mar.
LASCELLES deMERCADO & CO.	30-Sep.	31-Dec.
MAYBERRY INVESTMENTS LTD	31-Dec.	31-Mar.
MONTEGO FREEPORT LTD	31-Mar.	30-Jun.
MONTEGO BAY ICE	31-Dec.	31-Mar.
NATIONAL COMMERCIAL BANK JAMAICA LTD.	30-Sep.	31-Dec.
NCB CAPITAL MARKETS LTD.	30-Sep.	31-Dec.
PALACE AMUSEMENT	30-Jun.	30-Sep.
PAN CARIBBEAN FINANCIAL SERVICES LTD	31-Dec.	31-Mar.
PAN-JAMAICAN INVESTMENT TRUST	31-Dec.	31-Mar.
PEGASUS HOTELS OF JAMAICA	31-Mar.	30-Jun.
PULSE INVESTMENTS LTD.	30-Jun.	30-Sep.
RADIO JAMAICA	31-Mar.	30-Jun.
SAGICOR LIFE JAMAICA	31-Dec	31-Mar
SAGICOR FINANCIAL CORPORATION	31-Dec	31-Mar
SALADA FOODS JAMAICA	30-Sep.	31-Dec.
SCOTIA DBG INVESTMENTS	31-Oct	31-Jan
SCOTIA GROUP JAMAICA	31-Oct.	31-Jan.
SEPROD GROUP LTD.	31-Dec.	31-Mar.
SUPREME VENTURES LTD.*	31-Dec.	31-Mar.
TRINIDAD CEMENT LIMITED	31-Dec.	31-Mar.

Composition of the Indices

JSE INDEX	JSE ALL JAMAICAN COMPOSITE	JSE SELECT 2009
BERGER PAINTS LTD	BERGER PAINTS LTD	CABLE & WIRELESS (JA.) LTD.
CABLE & WIRELESS (JA.) LTD.	CABLE & WIRELESS (JA.) LTD.	CARIBBEAN CEMENT CO.
CAPITAL & CREDIT FINANCIAL GROUP	CAPITAL & CREDIT FINANCIAL GROUP	CARRERAS LIMITED
CARLTON SAVANNAH REIT (JA)	CARLTON SAVANNAH REIT (JA)	DESNOES & GEDDES
CARIBBEAN CEMENT CO.	CARIBBEAN CEMENT CO.	GLEANER COMPANY
CARRERAS LIMITED	CARRERAS LIMITED	GRACEKENNEDY LTD.
CIBONEY GROUP LTD	CIBONEY GROUP LTD	JAMAICA BROILERS GROUP
C.M.P. INDUSTRIES	C.M.P. INDUSTRIES	JAMAICA MONEY MARKET BROKERS
DESNOES & GEDDES	DESNOES & GEDDES	LASCELLES DEMERCADO & CO.
DYOLL GROUP	DYOLL GROUP	MAYBERRY INVESTMENTS LTD
FIRST CARIBBEAN INTERNATIONAL BANK	FIRST CARIBBEAN INTER. BANK JAMAICA	NATIONAL COMMERCIAL BANK JAMAICA
FIRST CARIBBEAN INTER. BANK JAMAICA	FIRST JAMAICA INVESTMENT LTD.	PAN-JAMAICAN INVESTMENT TRUST
FIRST JAMAICA INVESTMENTS LTD.	GLEANER COMPANY	SAGICOR LIFE JAMAICA
GLEANER COMPANY	GOODYEAR JAMAICA	SCOTIA DBG INVESTMENTS
GOODYEAR JAMAICA	GRACEKENNEDY LIMITED	SCOTIA GROUP JAMAICA
GRACEKENNEDY LIMITED	HARDWARE & LUMBER	
GUARDIAN HOLDINGS LTD.	JA. BROILERS GROUP	
HARDWARE & LUMBER	JAMAICA MONEY MARKET BROKERS	JSE SELECT 2010
JAMAICA BROILERS GROUP	JAMAICA PRODUCERS GROUP	CABLE & WIRELESS (JA.) LTD.
JAMAICA MONEY MARKET BROKERS LTD	KINGSTON WHARVES	CARIBBEAN CEMENT CO.
JAMAICA PRODUCERS GROUP	LASCELLES DEMERCADO & CO.	CARRERAS LIMITED
KINGSTON WHARVES	MAYBERRY INVESTMENTS LTD.	DESNOES & GEDDES
LASCELLES DEMERCADO & CO.	MONTEGO FREEPORT LTD.	GLEANER COMPANY
MAYBERRY INVESTMENTS LTD.	MONTEGO BAY ICE	GRACEKENNEDY LTD.
MONTEGO FREEPORT LTD.	NATIONAL COMMERCIAL BANK JAMAICA	JAMAICA BROILERS GROUP
MONTEGO BAY ICE	PALACE AMUSEMENT	JAMAICA MONEY MARKET BROKERS
NATIONAL COMMERCIAL BANK JAMAICA LTD.	PAN CARIBBEAN FINANCIAL SERVICES	MAYBERRY INVESTMENTS LTD
PALACE AMUSEMENT	PAN-JAMAICAN INVESTMENT TRUST	NATIONAL COMMERCIAL BANK JAMAICA
PAN CARIBBEAN FINANCIAL SERVICES LTD	PEGASUS HOTELS OF JAMAICA	PAN-JAMAICAN INVESTMENT TRUST
PAN-JAMAICAN INVESTMENT TRUST	PULSE INVESTMENTS LTD.	SAGICOR LIFE JAMAICA
PEGASUS HOTELS OF JAMAICA	RADIO JAMAICA	SCOTIA DBG INVESTMENTS
PULSE INVESTMENTS LTD.	SAGICOR LIFE JAMAICA	SCOTIA GROUP JAMAICA
RADIO JAMAICA	SALADA FOODS JA.	SUPREME VENTURES LIMITED
RBT FINANCIAL HOLDINGS LIMITED	SCOTIA DBG INVESTMENTS	
SAGICOR FINANCIAL CORPORATION	SCOTIA GROUP JAMAICA	
SAGICOR LIFE JAMAICA	SEPROD LIMITED	
SALADA FOODS JAMAICA	SUPREME VENTURES LTD.	
SCOTIA DBG INVESTMENTS		
SCOTIA GROUP JAMAICA		
SEPROD LIMITED		
SUPREME VENTURES LTD.		
TRINIDAD CEMENT LIMITED		

Carlton Savannah REIT (Jamaica) Ltd was renamed Kingston Properties Limited on October 29, 2009

Goodyear Jamaica Limited was delisted on July 20, 2009

Sagicor Financial Corporation was delisted on September 16, 2009

Quarterly Market Capitalisation 2009

Company	Issued Capital	Price Mar-31	March 31, 2009 Market Capitalisation
BERGER PAINTS LTD	214,322,393	1.80	385,780,307
CABLE & WIRELESS (JA.) LTD.	16,817,439,741	0.45	7,567,847,883
CAPITAL & CREDIT FINANCIAL GROUP	927,565,945	3.95	3,663,885,483
CARIBBEAN CEMENT CO.	851,136,591	3.60	3,064,091,728
CARRERAS LIMITED	485,440,000	37.76	18,330,214,400
CIBONEY GROUP LTD	546,000,000	0.05	27,300,000
DESNOES & GEDDES	2,809,171,264	3.90	10,955,767,930
FIRST CARIBBEAN INTERNATIONAL BANK	1,525,131,934	120.00	183,015,832,080
FIRST CARIBBEAN INTER. BANK JAMAICA	265,756,730	20.00	5,315,134,600
FIRST JAMAICA INVESTMENTS LTD.	303,500,000	19.04	5,778,640,000
GLENER COMPANY	1,211,243,827	1.53	1,853,203,055
GOODYEAR JAMAICA	59,400,000	3.26	193,644,000
GRACEKENNEDY LTD.	331,226,569	39.90	13,215,940,103
GUARDIAN HOLDINGS LTD.	202,280,534	320.00	64,729,770,880
HARDWARE & LUMBER	80,842,023	5.10	412,294,317
JAMAICA BROILERS GROUP	1,199,276,400	3.50	4,197,467,400
JAMAICA MONEY MARKET BROKERS LTD	1,463,386,752	6.00	8,780,320,512
JAMAICA PRODUCERS GROUP	187,024,006	16.07	3,005,475,776
KINGSTON PROPERTIES LIMITED	68,800,102	4.50	309,600,459
KINGSTON WHARVES	1,072,649,578	3.05	3,271,581,213
LASCELLES deMERCADO & CO.	96,000,000	300.01	28,800,960,000
MAYBERRY INVESTMENTS LTD.	1,201,149,291	1.95	2,342,241,117
MONTEGO FREEPORT LTD.	563,065,690	1.55	872,751,820
MONTEGO BAY ICE	6,161,510	16.00	98,584,160
NATIONAL COMMERCIAL BANK JAMAICA LTD.	2,466,762,828	12.22	30,143,841,758
PALACE AMUSEMENT	1,437,028	60.00	86,221,680
PAN CARIBBEAN FINANCIAL SERVICES LTD	547,924,039	12.34	6,761,382,641
PAN-JAMAICAN INVESTMENT TRUST	173,535,078	24.75	4,294,993,181
PEGASUS HOTELS	120,165,973	15.00	1,802,489,595
PULSE INVESTMENTS LTD.	271,789,674	5.45	1,481,253,723
RADIO JAMAICA	351,976,991	3.00	1,055,930,973
SAGICOR FINANCIAL CORPORATION	277,543,397	260.00	72,161,283,220
SAGICOR LIFE JAMAICA	3,750,263,846	4.20	15,751,108,153
SALADA FOODS JAMAICA	103,883,290	10.28	1,067,920,221
SCOTIA DBG INVESTMENTS	423,194,765	13.00	5,501,531,945
SCOTIA GROUP JAMAICA	3,111,572,984	14.15	44,028,757,724
SEPROD LIMITED	516,397,918	14.75	7,616,869,291
SUPREME VENTURES	2,637,254,926	2.50	6,593,137,315
TRINIDAD CEMENT LIMITED	249,765,136	80.00	19,981,210,880
TOTAL	47,491,438,753		588,516,261,524

Carlton Savannah REIT (Jamaica) Ltd was renamed Kingston Properties Limited on October 29, 2009

Goodyear Jamaica Limited was delisted on July 20, 2009

Sagicor Financial Corporation was delisted on September 16, 2009

Issued Capital	Price Jun-30	June 30, 2009 Market Capitalisation	Issued Capital	Price Sep-30
214,322,393	1.60	342,915,829	214,322,393	1.50
16,817,439,741	0.44	7,399,673,486	16,817,439,741	0.36
927,565,945	4.36	4,044,187,520	927,565,945	2.92
851,136,591	4.60	3,915,228,319	851,136,591	3.99
485,440,000	41.01	19,907,894,400	485,440,000	44.45
546,000,000	0.04	21,840,000	546,000,000	0.04
2,809,171,264	4.00	11,236,685,056	2,809,171,264	3.61
1,525,131,934	118.99	181,475,448,827	1,525,131,934	118.88
265,756,730	15.00	3,986,350,950	265,756,730	12.75
303,500,000	25.50	7,739,250,000	303,500,000	26.00
1,211,243,827	1.35	1,635,179,166	1,211,243,827	1.45
59,400,000	3.26	193,644,000		
331,226,569	48.03	15,908,812,109	331,445,161	42.46
202,280,534	320.00	64,729,770,880	202,204,673	320.00
80,842,023	5.50	444,631,127	80,842,023	4.91
1,199,276,400	3.41	4,089,532,524	1,199,276,400	4.24
1,463,386,752	4.51	6,599,874,252	1,463,386,752	4.10
187,024,006	15.00	2,805,360,090	187,024,006	14.01
68,800,102	4.50	309,600,459	68,800,102	4.50
1,072,649,578	2.80	3,003,418,818	1,072,649,578	2.30
96,000,000	310.00	29,760,000,000	96,000,000	280.00
1,201,149,291	1.90	2,282,183,653	1,201,149,291	1.72
563,065,690	2.28	1,283,789,773	563,065,690	1.91
6,161,510	16.00	98,584,160	6,161,510	16.00
2,466,762,828	13.00	32,067,916,764	2,466,762,828	13.00
1,437,028	60.00	86,221,680	1,437,028	60.00
547,924,039	15.49	8,487,343,364	547,924,039	13.19
173,535,078	35.49	6,158,759,918	173,535,078	33.00
120,165,973	12.54	1,506,881,301	120,165,973	12.51
271,789,674	5.44	1,478,535,827	271,789,674	5.48
351,976,991	1.73	608,920,194	351,976,991	2.50
277,543,397	260.00	72,161,283,220		
3,757,814,987	4.78	17,962,355,638	3,757,814,987	5.20
103,883,290	8.90	924,561,281	103,883,290	7.51
423,194,765	16.06	6,796,507,926	423,194,765	16.12
3,111,572,984	17.22	53,581,286,784	3,111,572,984	17.48
516,397,918	15.10	7,797,608,562	516,397,918	15.50
2,637,254,926	2.08	5,485,490,246	2,637,254,926	2.10
249,765,136	55.25	13,799,523,764	249,765,136	57.00
47,498,989,894		602,117,051,867	47,162,189,228	

Quarterly Market Capitalisation 2009

Company	September 30, 2009 Market Capitalisation	Issued Capital	Price Dec-31	December 31, 2009 Market Capitalisation
BERGER PAINTS LTD	321,483,590	214,322,393	1.20	257,186,872
CABLE & WIRELESS (JA.) LTD.	6,054,278,307	16,817,439,741	0.38	6,390,627,102
CAPITAL & CREDIT FINANCIAL GROUP	2,708,492,559	927,565,945	4.41	4,090,565,817
CARIBBEAN CEMENT CO.	3,396,034,998	851,136,591	4.00	3,404,546,364
CARRERAS LIMITED	21,577,808,000	485,440,000	35.02	17,000,108,800
CIBONEY GROUP LTD	21,840,000	546,000,000	0.10	54,600,000
DESNOES & GEDDES	10,141,108,263	2,809,171,264	3.42	9,607,365,723
FIRST CARIBBEAN INTERNATIONAL BANK	181,307,684,314	1,525,131,934	117.94	179,874,060,296
FIRST CARIBBEAN INTER. BANK JAMAICA	3,388,398,308	265,756,730	12.70	3,375,110,471
FIRST JAMAICA INVESTMENTS LTD.	7,891,000,000	303,500,000	27.97	8,488,895,000
GLEANER COMPANY	1,756,303,549	1,211,243,827	1.16	1,405,042,839
GOODYEAR JAMAICA				
GRACEKENNEDY LTD.	14,073,161,536	331,705,747	40.50	13,434,082,754
GUARDIAN HOLDINGS LTD.	64,705,495,360	202,204,673	299.50	60,560,299,564
HARDWARE & LUMBER	396,934,333	80,842,023	3.50	282,947,081
JAMAICA BROILERS GROUP	5,084,931,936	1,199,276,400	4.96	5,948,410,944
JAMAICA MONEY MARKET BROKERS LTD	5,999,885,683	1,463,386,752	4.00	5,853,547,008
JAMAICA PRODUCERS GROUP	2,620,206,324	187,024,006	25.89	4,842,051,515
KINGSTON PROPERTIES LIMITED	309,600,459	68,800,102	5.00	344,000,510
KINGSTON WHARVES	2,467,094,029	1,072,649,578	3.08	3,303,760,700
LASCELLES deMERCADO & CO.	26,880,000,000	96,000,000	250.00	24,000,000,000
MAYBERRY INVESTMENTS LTD.	2,065,976,781	1,201,149,291	1.99	2,390,287,089
MONTEGO FREEPORT LTD.	1,075,455,468	563,065,690	1.90	1,069,824,811
MONTEGO BAY ICE	98,584,160	6,161,510	15.67	96,550,862
NATIONAL COMMERCIAL BANK JAMAICA LTD.	32,067,916,764	2,466,762,828	16.00	39,468,205,248
PALACE AMUSEMENT	86,221,680	1,437,028	60.00	86,221,680
PAN CARIBBEAN FINANCIAL SERVICES LTD	7,227,118,074	547,924,039	18.10	9,917,425,106
PAN-JAMAICAN INVESTMENT TRUST	5,726,657,574	173,535,078	36.00	6,247,262,808
PEGASUS HOTELS	1,503,276,322	120,165,973	19.99	2,402,117,800
PULSE INVESTMENTS LTD.	1,489,407,414	271,789,674	5.44	1,478,535,827
RADIO JAMAICA	879,942,478	351,976,991	2.01	707,473,752
SAGICOR FINANCIAL CORPORATION				
SAGICOR LIFE JAMAICA	19,540,637,932	3,758,566,835	7.02	26,385,139,182
SALADA FOODS JAMAICA	780,163,508	103,883,290	15.50	1,610,190,995
SCOTIA DBG INVESTMENTS	6,821,899,612	423,194,765	16.62	7,033,496,994
SCOTIA GROUP JAMAICA	54,390,295,760	3,111,572,984	19.57	60,893,483,297
SEPROD LIMITED	8,004,167,729	516,397,918	18.00	9,295,162,524
SUPREME VENTURES	5,538,235,345	2,637,254,926	2.01	5,300,882,401
TRINIDAD CEMENT LIMITED	14,236,612,752	249,765,136	72.00	17,983,089,792
TOTAL	522,634,310,900	47,163,201,662		544,882,559,526

SUPREME VENTURES



Limited

- Gaming • Entertainment
- Financial Services



SUPREME VENTURES



Limited

Games people love to play...and more

Listed Companies Quarterly Issued Shares & Par Value 2009

Company	Issued Capital March 31, 2009	Issued Capital June 30, 2009
BERGER PAINTS LTD	214,322,393	214,322,393
CABLE & WIRELESS (JA.) LTD.	16,817,439,741	16,817,439,741
CAPITAL & CREDIT FINANCIAL GROUP	927,565,945	927,565,945
CARIBBEAN CEMENT CO.	851,136,591	851,136,591
CARRERAS LIMITED	485,440,000	485,440,000
CIBONEY GROUP LTD	546,000,000	546,000,000
DESNOES & GEDDES	2,809,171,264	2,809,171,264
FIRST CARIBBEAN INTERNATIONAL BANK	1,525,131,934	1,525,131,934
FIRST CARIBBEAN INTER. BANK JAMAICA	265,756,730	265,756,730
FIRST JAMAICA INVESTMENTS LTD.	303,500,000	303,500,000
GLENER COMPANY	1,211,243,827	1,211,243,827
GOODYEAR JAMAICA	59,400,000	59,400,000
GRACEKENNEDY LTD.	331,226,569	331,226,569
GUARDIAN HOLDINGS LTD.	202,280,534	202,280,534
HARDWARE & LUMBER	80,842,023	80,842,023
JA. BROILERS GROUP	1,199,276,400	1,199,276,400
JAMAICA MONEY MARKET BROKERS LTD	1,463,386,752	1,463,386,752
JA. PRODUCERS GROUP	187,024,006	187,024,006
KINGSTON PROPERTIES LIMITED	68,800,102	68,800,102
KINGSTON WHARVES	1,072,649,578	1,072,649,578
LASCELLES deMERCADO & CO.	96,000,000	96,000,000
MAYBERRY INVESTMENT LTD.	1,201,149,291	1,201,149,291
MONTEGO FREEPORT LTD.	563,065,690	563,065,690
MONTEGO BAY ICE	6,161,510	6,161,510
NATIONAL COMMERCIAL BANK JAMAICA LTD.	2,466,762,828	2,466,762,828
PALACE AMUSEMENT	1,437,028	1,437,028
PAN CARIBBEAN FINANCIAL SERVICES LTD	547,924,039	547,924,039
PAN-JAMAICAN INVESTMENT TRUST	173,535,078	173,535,078
PEGASUS HOTELS OF JAMAICA	120,165,973	120,165,973
PULSE INVESTMENTS	271,789,674	271,789,674
RADIO JAMAICA	351,976,991	351,976,991
SAGICOR FINANCIAL CORPORATION	277,543,397	277,543,397
SAGICOR LIFE JAMAICA	3,750,263,846	3,757,814,987
SALADA FOODS JAMAICA	103,883,290	103,883,290
SCOTIA DBG INVESTMENTS	423,194,765	423,194,765
SCOTIA GROUP JAMAICA	3,111,572,984	3,111,572,984
SEPROD LIMITED	516,397,918	516,397,918
SUPREME VENTURES LIMITED	2,637,254,926	2,637,254,926
TRINIDAD CEMENT LIMITED	249,765,136	249,765,136
TOTAL	47,491,438,753	47,498,989,894

Carlton Savannah REIT (Jamaica) Ltd was renamed Kingston Properties Limited on October 29, 2009

Goodyear Jamaica Limited was delisted on July 20, 2009

Sagicor Financial Corporation was delisted on September 16, 2009

Listed Companies Quarterly Issued Shares & Par Value 2009

Issued Capital September 30, 2009	Issued Capital December 31, 2009	Par Value December 31, 2009
214,322,393	214,322,393	0.50
16,817,439,741	16,817,439,741	0.00
927,565,945	927,565,945	0.50
851,136,591	851,136,591	0.50
485,440,000	485,440,000	0.25
546,000,000	546,000,000	0.10
2,809,171,264	2,809,171,264	0.00
1,525,131,934	1,525,131,934	0.00
265,756,730	265,756,730	0.50
303,500,000	303,500,000	0.00
1,211,243,827	1,211,243,827	0.50
0	0	0.00
331,445,161	331,705,747	1.00
202,204,673	202,204,673	0.00
80,842,023	80,842,023	0.50
1,199,276,400	1,199,276,400	0.50
1,463,386,752	1,463,386,752	0.25
187,024,006	187,024,006	0.10
68,800,102	68,800,102	0.00
1,072,649,578	1,072,649,578	0.20
96,000,000	96,000,000	0.00
1,201,149,291	1,201,149,291	0.10
563,065,690	563,065,690	0.00
6,161,510	6,161,510	0.20
2,466,762,828	2,466,762,828	1.00
1,437,028	1,437,028	0.00
547,924,039	547,924,039	1.00
173,535,078	173,535,078	0.00
120,165,973	120,165,973	1.00
271,789,674	271,789,674	0.10
351,976,991	351,976,991	0.00
0	0	0.00
3,757,814,987	3,758,566,835	0.10
103,883,290	103,883,290	0.50
423,194,765	423,194,765	0.10
3,111,572,984	3,111,572,984	0.00
516,397,918	516,397,918	0.00
2,637,254,926	2,637,254,926	0.00
249,765,136	249,765,136	0.00
47,162,189,228	47,163,201,662	

Month End Stock Prices 2009

Company	Jan	Feb	Mar	Apr
BERGER PAINTS LTD	2.02	1.90	1.80	1.78
CABLE & WIRELESS (JA.) LTD.	0.50	0.40	0.45	0.43
CAPITAL & CREDIT FINANCIAL GROUP	4.00	3.40	3.95	4.00
CARIBBEAN CEMENT CO.	4.50	4.00	3.60	4.08
CARRERAS LIMITED	52.00	43.00	37.76	39.00
CIBONEY GROUP LTD	0.03	0.05	0.05	0.05
DESNOES & GEDDES	4.15	3.85	3.90	3.90
FIRST CARIBBEAN INTERNATIONAL BANK	122.00	122.00	120.00	119.97
FIRST CARIBBEAN INTER. BANK JAMAICA	21.00	20.00	20.00	20.00
FIRST JAMAICA INVESTMENTS LTD.	22.07	23.20	19.04	19.00
GLENER COMPANY	1.70	1.65	1.53	1.55
GOODYEAR JAMAICA	3.26	3.26	3.26	3.26
GRACEKENNEDY LTD.	44.00	43.00	39.90	43.01
GUARDIAN HOLDINGS LTD.	320.00	320.00	320.00	320.00
HARDWARE & LUMBER	9.01	9.00	5.10	5.10
JA. BROILERS GROUP	3.62	3.26	3.50	3.19
JAMAICA MONEY MARKET BROKERS	5.00	5.00	6.00	6.00
JA. PRODUCERS GROUP	15.05	16.00	16.07	15.00
KINGSTON PROPERTIES LTD	4.65	4.50	4.50	4.50
KINGSTON WHARVES	4.75	3.90	3.05	2.60
LASCELLES DEMERCADO & CO.	449.99	400.00	300.01	300.00
MAYBERRY INVESTMENTS LTD.	2.10	2.00	1.95	1.90
MONTEGO FREEPORT LTD.	1.65	1.55	1.55	1.55
MONTEGO BAY ICE	16.00	16.00	16.00	16.00
NATIONAL COMMERCIAL BANK JA	17.00	15.49	12.22	12.39
PALACE AMUSEMENT	61.00	60.00	60.00	60.00
PAN CARIBBEAN FINANCIAL SERVICES	15.00	12.50	12.34	13.00
PAN-JAMAICAN INVESTMENT TRUST	35.00	28.50	24.75	26.00
PEGASUS HOTELS	17.50	15.00	15.00	13.50
PULSE INVESTMENTS LTD	5.50	5.45	5.45	5.00
RADIO JAMAICA	2.50	2.15	3.00	2.00
SAGICOR FINANCIAL CORPORATION	260.00	260.00	260.00	260.00
SAGICOR LIFE JAMAICA	5.70	5.00	4.20	4.18
SALADA FOODS JAMAICA	8.80	11.50	10.28	10.65
SCOTIA DBG INVESTMENTS	15.00	16.20	13.00	13.00
SCOTIA GROUP JAMAICA	16.50	15.00	14.15	16.00
SEPROD LIMITED	16.20	13.50	14.75	13.80
SUPREME VENTURES LIMITED	2.90	2.01	2.50	2.12
TRINIDAD CEMENT LIMITED	80.00	80.00	80.00	80.00

Carlton Savannah REIT (Jamaica) Ltd was renamed Kingston Properties Limited on October 29, 2009

Goodyear Jamaica Limited was delisted on July 20, 2009

Sagicor Financial Corporation was delisted on September 16, 2009

Month End Stock Prices 2009

May	Jun	Jul	Aug	Sep	Oct	Nov	Dec
1.78	1.60	1.60	1.60	1.50	1.30	1.15	1.20
0.48	0.44	0.40	0.38	0.36	0.37	0.37	0.38
3.75	4.36	4.04	4.06	2.92	2.50	3.09	4.41
4.50	4.60	3.61	3.40	3.99	3.70	3.65	4.00
40.43	41.01	40.78	41.30	44.45	43.54	38.99	35.02
0.07	0.04	0.04	0.04	0.04	0.04	0.06	0.10
4.00	4.00	3.90	4.10	3.61	3.81	3.51	3.42
118.99	118.99	116.00	118.89	118.88	118.00	117.95	117.94
20.00	15.00	13.39	13.00	12.75	12.75	12.90	12.70
23.50	25.50	24.00	23.24	26.00	26.50	28.01	27.97
1.53	1.35	1.36	1.41	1.45	1.22	1.16	1.16
3.26	3.26						
49.52	48.03	45.50	46.51	42.46	39.00	40.02	40.50
320.00	320.00	320.00	320.00	320.00	320.00	299.50	299.50
5.00	5.50	6.00	4.90	4.91	4.91	4.21	3.50
3.42	3.41	3.86	3.95	4.24	4.34	4.42	4.96
5.00	4.51	4.19	4.00	4.10	4.01	4.00	4.00
15.05	15.00	14.11	15.01	14.01	13.50	18.82	25.89
4.50	4.50	4.50	4.50	4.50	4.50	6.70	5.00
2.85	2.80	2.70	2.31	2.30	1.90	2.03	3.08
310.00	310.00	300.00	280.00	280.00	250.00	251.00	250.00
1.95	1.90	1.84	1.81	1.72	1.62	1.73	1.99
1.80	2.28	2.01	2.11	1.91	1.98	1.80	1.90
16.00	16.00	16.00	16.00	16.00	16.00	16.00	15.67
14.37	13.00	13.04	13.08	13.00	13.10	13.09	16.00
60.00	60.00	60.00	60.00	60.00	60.00	60.00	60.00
15.17	15.49	14.51	13.10	13.19	14.30	21.37	18.10
36.00	35.49	33.23	33.96	33.00	32.49	38.50	36.00
12.51	12.54	12.54	12.54	12.51	12.51	20.00	19.99
5.44	5.44	5.48	5.48	5.48	5.45	5.45	5.44
1.78	1.73	1.60	2.05	2.50	2.25	1.95	2.01
260.00	260.00	260.00	260.00				
5.02	4.78	5.04	4.97	5.20	6.40	7.00	7.02
11.00	8.90	8.50	9.50	7.51	10.00	14.97	15.50
17.00	16.06	15.72	16.40	16.12	17.50	23.76	16.62
17.99	17.22	16.80	17.02	17.48	17.87	20.96	19.57
15.01	15.10	14.20	16.00	15.50	15.50	19.00	18.00
2.00	2.08	2.00	2.15	2.10	2.01	2.00	2.01
80.00	55.25	55.25	55.25	57.00	72.00	72.00	72.00

MONTHLY ORDINARY TRADE STATISTICS

Month	No. of Transactions	Volume 2009	Value 2009
JANUARY	1,336	112,655,167	\$527,323,399.77
FEBRUARY	1,474	47,038,295	\$368,618,533.91
MARCH	1,531	469,424,168	\$1,189,953,587.60
APRIL	1,123	81,663,869	\$707,093,996.49
MAY	1,117	85,753,852	\$450,430,170.76
JUNE	1,167	23,566,257	\$200,622,078.72
JULY	1,412	64,738,956	\$505,670,683.38
AUGUST	1,322	120,260,945	\$1,198,222,930.12
SEPTEMBER	1,285	154,016,795	\$837,978,002.58
OCTOBER	1,145	36,567,726	\$240,680,599.07
NOVEMBER	1,570	319,278,919	\$3,326,288,191.85
DECEMBER	1,547	147,193,475	\$1,961,496,299.49
TOTAL	16,029	1,662,158,424	\$11,514,378,473.74

MONTHLY BLOCK TRANSACTIONS STATISTICS

Month	No. of Transactions	Volume 2009	Value 2009
JANUARY	0	0	\$0.00
FEBRUARY	0	0	\$0.00
MARCH	7	28,604,080	\$162,831,787.40
APRIL	0	0	\$0.00
MAY	1	841,000	\$38,358,010.00
JUNE	0	0	\$0.00
JULY	0	0	\$0.00
AUGUST	0	0	\$0.00
SEPTEMBER	1	58,690,760	\$418,465,118.80
OCTOBER	0	0	\$0.00
NOVEMBER	0	0	\$0.00
DECEMBER	61	14,599,290	\$56,047,142.02
TOTAL	70	102,735,130	\$675,702,058.22

Monthly Trading Volume*

	Jan	Feb	Mar	Apr
Ordinary Shares				
Berger Paints	88,814	219,368	426,639	519,280
Cable & Wireless (Jamaica)	3,686,954	12,008,071	3,837,153	20,668,929
Capital and Credit Financial Group	1,013,704	127,477	1,096,180	7,150
Caribbean Cement Company	189,619	345,386	909,776	182,120
Carreras Limited	698,412	283,621	499,306	322,393
Ciboney Group	164,030	907,875	600,200	2,218,734
Hesnoes & Geddes	635,560	743,725	1,084,635	480,622
First Caribbean International Bank	65,408	0	7,701	81,194
First Caribbean International Bank Ja	0	297	0	0
First Jamaica Investments Ltd.	252,227	76,142	658,913	30,018
Gleaner Company	925,213	1,317,954	343,906	82,000
Goodyear Jamaica Ltd	0	0	0	0
GraceKennedy Ltd	445,690	365,656	154,095	99,150
Guardian Holdings Ltd.	0	0	0	8,500
Hardware & Lumber Ltd	300	208,287	9,000	500
Jamaica Broilers Group	1,570,668	2,490,636	5,096,621	4,254,411
Jamaica Money Market Brokers	2,955,168	747,574	681,082	291,424
Jamaica Producers Group	75,758	1,039,249	529,903	60,385
Kingston Properties Limited	100	3,500	0	10,000
Kingston Wharves	33,869	48,718	46,025	36,101
Lascelles deMercado & Co.	46,172	10,284	1,327	34,406
Mayberry Investments Ltd	1,993,037	1,929,006	5,215,567	1,497,423
Montego Freeport Ltd.	135,176	296,046	383,762	6,100
Montego Bay Ice	1,815	0	0	0
National Commercial Bank Ltd.	1,919,502	1,123,465	3,660,962	34,254,848
Palace Amusement Ltd	0	4,100	0	0
Pan Caribbean Financial Services	46,515	42,152	789,454	23,844
Pan-Jamaican Investment Trust	356,633	70,057	423,739	141,794
Pegasus Hotels	900	10,000	0	930
Pulse Investments Ltd.	9,020	100	0	5,000
Radio Jamaica	80,553	2,173,221	198,732	41,616
Sagicor Financial Corporation	500	0	0	0
Sagicor Life Jamaica	921,928	1,163,382	2,561,586	728,536
Salada Foods Jamaica	132,064	26,560	66,225	19,460
Scotia DBG Investments	1,472,024	193,054	1,494,835	198,127
Scotia Group Jamaica	2,516,854	4,916,985	4,837,594	2,887,845
Seprod Limited	109,576	10,548,773	186,277	9,594,345
Supreme Ventures Limited	88,833,606	913,662	431,964,583	2,034,700
Trinidad Cement Ltd.	0	0	0	0
Total Ordinary (Monthly)	111,377,369	44,354,383	467,765,778	80,821,885

Carlton Savannah REIT (Jamaica) Ltd was renamed Kingston Properties Limited on October 29, 2009

Goodyear Jamaica Limited was delisted on July 20, 2009

Sagicor Financial Corporation was delisted on September 16, 2009

Monthly Trading Volume*

May	Jun	Jul	Aug	Sep
21,800	33,879	9,977	22,834	68,319
36,414,027	2,494,610	7,167,196	28,762,565	33,156,595
1,348,694	175,516	260,130	136,365	1,245,387
595,211	1,420,917	2,220,016	1,699,847	616,294
561,746	210,730	703,278	632,845	1,584,535
1,481,266	2,003,000		220,000	50,000
1,000,110	1,082,748	1,483,482	263,015	1,613,750
443		77,191	75,500	25,240
26,663	4,500	8,131	5,112	39,849
13,766	115,044	11,550	149,580	1,081,300
1,088,801	504,396	341,116	2,216,173	755,646
0				
1,232,904	983,330	2,167,542	1,557,994	2,216,711
0				
51,000	48,000	1,763	49,000	29,147
4,272,917	720,792	18,525,675	8,288,154	15,457,180
78,917	443,671	474,440	527,699	180,548
12,510	63,241	242,067	130,983	3,428,472
43,230	161,900			
160,929	223,428	95,209	177,905	386,263
754	22,299	825	15,418	459,739
2,259,079	1,756,438	1,805,337	658,392	1,783,700
100,000	384,477	212,560	201,146	97,654
0				
13,059,187	1,202,034	7,299,620	61,687,449	4,584,197
0	0			
73,824	15,000	343,258	161,276	416,390
887,860	67,459	27,930	850,875	549,479
854	30,000			63,927
5,340	0	100,000		
9,211	53,658	241,878	79,673	1,294,690
0	0			
2,580,632	1,041,523	1,141,280	1,955,881	858,574
4,450	37,029	24,500	16,384	1,800
1,039,117	817,839	1,422,213	920,893	2,133,387
2,565,904	2,567,387	5,297,275	6,574,453	4,746,045
1,403,500	59,849	1,239,360	396,101	584,350
11,934,182	3,394,164	9,968,126	1,095,537	73,822,292
0	300,100			100
84,328,828	22,438,958	62,912,925	119,529,049	153,331,560

Monthly Trading Volume*

	Oct	Nov	Dec	Year
Ordinary Shares				
Berger Paints	34,300	47,409	817,857	2,310,476
Cable & Wireless (Jamaica)	3,049,283	17,459,900	2,289,389	170,994,672
Capital and Credit Financial Group	1,931,660	552,872	926,333	8,821,468
Caribbean Cement Company	465,488	326,529	412,399	9,383,602
Carreras Limited	216,700	1,885,597	1,823,759	9,422,922
Ciboney Group	92,759	452,405	555,000	8,745,269
Desnoes & Geddes	3,676,968	2,364,590	4,602,806	19,032,011
First Caribbean International Bank	84,900	25,000	22,388	464,965
First Caribbean International Bank Ja	2,600	5,160	104,766	197,078
First Jamaica Investments Ltd.	21,983	170,358	125,466	2,706,347
Gleaner Company	10,585,004	27,707,226	4,266,340	50,133,775
Goodyear Jamaica Ltd				0
GraceKennedy Ltd	371,425	981,186	770,281	11,345,964
Guardian Holdings Ltd.	0	4,500		13,000
Hardware & Lumber Ltd	0	1,924	54,833	453,754
Jamaica Broilers Group	1,963,932	5,137,630	8,790,140	76,568,756
Jamaica Money Market Brokers	239,973	335,950	196,053	7,152,499
Jamaica Producers Group	522,450	621,731	7,479,581	14,206,330
Kingston Properties Limited	0	3,097,160	60,865	3,376,755
Kingston Wharves	213,373	78,479	336,765	1,837,064
Lascelles deMercado & Co.	18,174	5,238	2,474	617,110
Mayberry Investments Ltd	2,364,774	783,578	753,400	22,799,731
Montego Freeport Ltd.	37,000	516,269	77,941	2,448,131
Montego Bay Ice			15,000	16,815
National Commercial Bank Ltd.	2,242,021	20,856,133	78,740,902	230,630,320
Palace Amusement Ltd	100	0	0	4,200
Pan Caribbean Financial Services	37,890	183,858,118	1,124,528	186,932,249
Pan-Jamaican Investment Trust	620,652	817,567	723,043	5,537,088
Pegasus Hotels	0	145,581	5,481	257,673
Pulse Investments Ltd.	3,000	0	1,906,000	2,028,460
Radio Jamaica	539,017	5,878,724	321,936	10,912,909
Sagicor Financial Corporation				500
Sagicor Life Jamaica	1,205,329	3,116,781	10,003,601	27,279,033
Salada Foods Jamaica	54,136	13,000	4,542,178	4,937,786
Scotia DBG Investments	133,357	350,588	1,800,930	11,976,364
Scotia Group Jamaica	4,563,167	2,139,874	6,341,992	49,955,375
Seprod Limited	55,595	428,517	357,188	24,963,431
Supreme Ventures Limited	307,378	23,099,914	3,946,722	651,314,866
Trinidad Cement Ltd.	100	0	0	300,300
Total Ordinary (Monthly)	35,654,488	303,265,488	144,298,337	1,630,079,048

We are Investing in Caribbean Economies...



Bank of Jamaica Building, Jamaica

The TCL Group is proud to be associated with the building of financial centres around the Caribbean, symbols of strength and stability that transform and modernize skylines, mirroring the economic progress of people throughout the Region.

Because... What We Do *IS* Who We Are

Building Caribbean Excellence...

• TRINIDAD CEMENT LIMITED • TOL PACKAGING LIMITED • TOL • POMBA MANUFACTURING LIMITED • KINARA CEMENT COMPANY LIMITED
• READING (WEST INDIES) LIMITED • TOL TRADING LIMITED • CARIBBEAN CEMENT COMPANY LIMITED • TOL GUAYAMA INC.



ONE CARIBBEAN...
ONE COMPANY
Website: www.tclgroup.biz

Monthly Value*

Ordinary Shares	Jan	Feb	Mar	Apr
Berger Paints	177,882	418,359	775,784	884,722
Cable & Wireless (Jamaica)	2,085,284	4,791,736	1,602,823	9,148,256
Capital and Credit Financial Group	4,005,440	483,577	4,067,167	28,550
Caribbean Cement Company	757,357	1,403,727	3,174,034	696,582
Carreras Limited	27,362,353	13,068,997	19,307,630	12,455,549
Ciboney Group	7,190	45,694	30,010	110,937
Desnoes & Geddes	2,630,673	2,952,874	4,203,729	1,884,143
First Caribbean International Bank	7,859,776	0	926,040	9,663,255
First Caribbean International Bank Ja	0	5,940	0	0
First Jamaica Investments Ltd.	5,373,013	1,767,919	12,868,529	570,357
Gleaner Company	1,627,634	2,185,267	519,708	127,460
Goodyear Jamaica Ltd	0	0	0	0
GraceKennedy Ltd	19,710,743	15,490,934	6,221,744	4,116,505
Guardian Holdings Ltd.	0	0	0	2,720,000
Hardware & Lumber Ltd	2,703	1,774,647	52,000	2,550
Jamaica Broilers Group	5,518,343	8,743,437	18,539,979	13,936,220
Jamaica Money Market Brokers	19,075,256	3,276,260	3,837,956	1,747,918
Jamaica Producers Group	1,337,435	17,420,022	9,634,184	949,500
Kingston Properties Limited	465	16,000	0	45,000
Kingston Wharves	161,621	215,771	151,739	97,837
Lascelles deMercado & Co.	20,406,930	3,403,355	438,607	10,137,179
Mayberry Investments Ltd.	3,816,792	3,842,023	9,917,601	2,673,349
Montego Freeport Ltd.	222,016	459,124	565,505	9,455
Montego Bay Ice	29,040	0	0	0
National Commercial Bank Ltd.	32,852,565	16,710,885	49,460,277	421,573,532
Palace Amusement Ltd	0	246,000	0	0
Pan Caribbean Financial Services	625,151	563,789	9,858,845	311,057
Pan-Jamaican Investment Trust	9,967,055	2,059,851	10,479,479	3,876,179
Pegasus Hotels	15,750	150,000	0	12,555
Pulse Investments Ltd.	49,580	545	0	25,000
Radio Jamaica	214,863	5,481,955	451,624	83,864
Sagicor Financial Corporation	130,000	0	0	0
Sagicor Life Jamaica	4,684,911	5,649,500	11,546,156	3,118,842
Salada Foods Jamaica	1,343,965	292,772	690,975	207,249
Scotia DBG Investments	17,932,992	2,927,951	19,401,542	2,580,706
Scotia Group Jamaica	41,917,008	76,115,094	75,484,342	45,100,769
Seprod Limited	1,946,686	168,712,070	2,530,824	151,809,425
Supreme Ventures	290,460,519	1,867,455	909,531,235	4,370,942
Trinidad Cement Ltd.	0	0	0	0
Total Ordinary (Monthly)	524,308,992	362,543,531	1,186,270,068	705,075,445

Carlton Savannah REIT (Jamaica) Ltd was renamed Kingston Properties Limited on October 29, 2009

Goodyear Jamaica Limited was delisted on July 20, 2009

Sagicor Financial Corporation was delisted on September 16, 2009

Monthly Value*

May	Jun	Jul	Aug	Sep
40,636	53,789	15,973	36,669	106,139
17,224,521	1,104,248	2,882,444	11,429,578	13,217,551
4,110,403	719,255	1,030,544	551,656	3,771,334
2,627,056	6,479,827	9,377,833	5,840,698	2,199,933
22,552,633	8,771,956	29,192,516	27,042,961	66,677,581
78,063	100,120		8,800	2,000
3,917,946	4,277,077	5,816,409	1,071,199	6,837,735
52,713	0	9,173,946	8,974,750	3,000,570
532,376	70,985	116,952	66,480	509,291
314,265	2,774,871	289,850	3,505,620	28,113,800
1,690,186	707,997	464,642	3,072,039	1,095,687
0	0			
57,568,492	46,785,710	99,850,418	72,102,184	93,992,872
0	0			
255,100	261,095	10,578	240,800	143,070
15,259,738	2,584,925	67,419,703	33,806,149	65,633,232
407,960	2,166,958	2,026,873	2,243,518	732,343
191,096	948,564	3,424,160	1,933,950	44,725,298
184,558	798,400			
427,231	673,774	276,835	442,972	891,624
231,220	6,860,670	247,500	4,608,082	128,903,410
4,534,465	3,337,938	3,363,000	1,196,714	3,327,827
180,000	784,456	457,916	433,546	186,519
0	0			
167,160,858	15,804,191	95,232,962	839,248,240	59,659,996
0	0			
1,070,345	228,886	5,324,991	2,182,200	5,496,202
30,924,041	2,409,222	935,935	29,015,628	18,307,827
10,684	381,576			799,727
29,050	0	548,000		
16,503	94,431	342,556	175,728	2,970,907
0	0			
12,369,357	5,031,980	5,545,323	10,235,673	4,542,054
47,669	329,290	206,450	149,477	15,508
13,849,203	13,582,867	23,298,494	15,050,753	34,488,294
42,484,705	45,251,525	90,627,497	113,455,026	83,416,850
21,051,160	936,594	18,402,846	6,075,001	9,064,427
25,224,699	6,877,762	21,537,490	2,267,785	149,905,606
0	16,581,900			5,700
446,618,928	197,772,838	497,440,636	1,196,463,875	832,740,914

Monthly Value*

Ordinary Shares	Oct	Nov	Dec	Year
Berger Paints	50,590	53,260	939,358	3,553,163
Cable & Wireless (Jamaica)	1,122,538	6,720,656	863,853	72,193,489
Capital and Credit Financial Group	5,168,886	1,459,816	3,554,461	28,951,089
Caribbean Cement Company	1,688,709	1,175,155	1,542,442	36,963,354
Carreras Limited	9,276,894	75,709,180	68,007,676	379,425,925
Ciboney Group	3,710	25,035	39,600	451,158
Desnoes & Geddes	13,891,209	8,622,031	15,514,382	71,619,406
First Caribbean International Bank	10,045,685	2,948,750	2,640,521	55,286,005
First Caribbean International Bank Ja	33,170	66,016	1,343,484	2,744,694
First Jamaica Investments Ltd.	577,976	4,737,539	3,487,326	64,381,064
Gleaner Company	13,703,038	32,115,395	5,021,878	62,330,930
Goodyear Jamaica Ltd				0
GraceKennedy Ltd	14,644,580	38,595,974	31,403,565	500,483,721
Guardian Holdings Ltd.		947,700	0	3,667,700
Hardware & Lumber Ltd		9,080	211,211	2,962,834
Jamaica Broilers Group	8,546,689	22,979,891	41,692,806	304,661,112
Jamaica Money Market Brokers	971,592	1,336,076	784,823	38,607,535
Jamaica Producers Group	6,767,232	8,700,762	191,099,968	287,132,171
Kingston Properties Limited		20,725,472	305,575	22,075,470
Kingston Wharves	470,318	154,758	847,105	4,811,584
Lascelles deMercado & Co.	4,946,220	1,312,897	617,860	182,113,930
Mayberry Investments Ltd.	4,333,161	1,364,866	1,384,363	43,092,100
Montego Freeport Ltd.	71,250	958,231	141,147	4,469,165
Montego Bay Ice	0	0	235,000	264,040
National Commercial Bank Ltd.	29,203,893	303,374,432	1,218,814,763	3,249,096,594
Palace Amusement Ltd	6,000	0	0	252,000
Pan Caribbean Financial Services	505,070	2,579,612,472	20,544,234	2,626,323,242
Pan-Jamaican Investment Trust	19,680,790	27,694,307	24,808,552	180,158,868
Pegasus Hotels	0	2,553,943	109,565	4,033,799
Pulse Investments Ltd.	16,350	0	10,367,950	11,036,475
Radio Jamaica	1,188,466	12,852,294	623,039	24,496,230
Sagicor Financial Corporation				130,000
Sagicor Life Jamaica	6,690,305	20,990,243	67,463,296	157,867,639
Salada Foods Jamaica	495,530	153,721	70,017,187	73,949,793
Scotia DBG Investments	2,232,895	7,946,682	33,974,826	187,267,205
Scotia Group Jamaica	80,600,225	41,513,594	122,170,299	858,136,934
Seprod Limited	853,523	7,120,353	6,546,158	395,049,067
Supreme Ventures	631,220	46,055,777	7,887,495	1,466,617,982
Trinidad Cement Ltd.	7,200	0	0	16,594,800
Total Ordinary (Monthly)	238,424,914	3,280,586,360	1,955,005,765	11,423,252,267

**IDEAL Investment Power At Your Fingertips...
Wealth Creation Geniuses**



**Ideal Portfolio Services Co. Ltd.
Licensed Securities Dealers**



- ◆ Investment Planning
- ◆ Equity or Mixed Portfolio Management
- ◆ Government Securities
- ◆ Local & Foreign Currency Investment
- ◆ Bonds



Tel: (876) 960-6390-4

Fax: (876) 960-6816

17 Ripon Road, Kingston 5

E-mail: idealfin@cwjamaica.com

Monthly High and Low Stock Prices

Monthly High / Low Stock Prices						
	January		February		March	
	High	Low	High	Low	High	Low
Ordinary Shares						
Berger Paints	2.02	2.00	2.01	1.90	1.91	1.78
Cable & Wireless (Jamaica)	0.65	0.50	0.50	0.36	0.48	0.38
Capital and Credit Financial Group	5.00	3.50	4.00	3.00	3.99	3.40
Caribbean Cement Company	5.00	3.73	4.55	3.90	3.90	3.20
Carreras Limited	52.00	35.50	51.99	42.00	44.00	37.00
Ciboney Group	0.05	0.03	0.06	0.05	0.05	0.05
Desnoes & Geddes	4.50	4.10	4.48	3.80	4.00	3.81
First Caribbean International Bank	122.00	120.00			122.00	119.00
First Caribbean International Bank Ja			20.00	20.00		
First Jamaica Investments Ltd.	22.60	21.00	25.38	23.03	23.03	19.01
Gleaner Company	1.80	1.50	1.84	1.60	1.64	1.50
Goodyear Jamaica Ltd						
GraceKennedy Ltd	46.00	42.00	44.40	42.00	43.00	39.00
Guardian Holdings Ltd.						
Hardware & Lumber Ltd	9.01	9.01	9.01	8.00	8.00	5.10
Jamaica Broilers Group	4.00	3.22	4.00	3.25	3.99	3.23
Jamaica Money Market Brokers	7.33	5.00	5.00	4.00	6.00	5.00
Jamaica Producers Group	22.00	15.05	23.00	15.00	20.01	13.60
Kingston Properties Limited	4.65	4.65	4.60	4.50		
Kingston Wharves	4.80	4.70	4.75	3.60	3.35	3.05
Lascelles deMercado & Co.	450.00	326.00	400.00	300.00	400.00	300.01
Mayberry Investments Ltd.	2.30	1.80	2.35	1.80	2.00	1.75
Montego Freeport Ltd.	1.80	1.55	1.60	1.50	1.55	1.45
Montego Bay Ice	16.00	16.00				
National Commercial Bank Ja. Ltd.	19.50	15.81	17.10	13.60	15.00	12.00
Palace Amusement Ltd			60.00	60.00		
Pan Caribbean Financial Services	15.00	12.51	17.25	12.00	13.01	12.00
Pan Jamaican Investment Trust	40.00	24.99	35.00	27.50	29.00	23.00
Pegasus Hotels	17.50	17.50	15.00	15.00		
Pulse Investments Ltd.	5.50	5.35	5.45	5.45		
Radio Jamaica	2.90	2.50	2.70	2.14	3.00	2.14
Sagicor Financial Corporation	260.00	260.00				
Sagicor Life Jamaica	5.70	4.94	5.70	4.50	5.10	4.04
Salada Foods Jamaica	17.00	8.76	20.50	9.00	11.50	9.99
Scotia DBG Investments	15.00	12.00	19.50	14.08	17.50	12.00
Scotia Group Jamaica	18.50	16.00	16.56	14.00	16.00	14.02
Seprod Limited	17.80	16.20	16.19	13.50	14.75	13.00
Supreme Ventures Ltd.	3.30	2.00	2.10	1.82	3.00	1.72
Trinidad Cement Ltd.						

Carlton Savannah REIT (Jamaica) Ltd was renamed Kingston Properties Limited on October 29, 2009
 Goodyear Jamaica Limited was delisted on July 20, 2009
 Sagicor Financial Corporation was delisted on September 16, 2009

Monthly High and Low Stock Prices

Monthly High / Low Stock Prices									
April		May		June		July		August	
High	Low	High	Low	High	Low	High	Low	High	Low
2.05	1.60	2.00	1.78	1.60	1.56	1.61	1.60	1.65	1.60
0.46	0.41	0.48	0.42	0.48	0.42	0.47	0.40	0.45	0.37
4.00	3.95	4.50	2.55	4.50	3.95	4.05	3.20	4.40	3.50
4.20	3.61	5.00	3.89	4.90	4.35	4.85	3.40	4.00	3.40
40.00	37.80	43.50	39.00	45.00	40.00	45.00	40.10	43.00	41.30
0.05	0.05	0.07	0.05	0.05	0.04			0.04	0.04
4.00	3.90	4.00	3.80	4.00	3.85	4.30	3.80	4.10	4.00
120.00	117.00	118.99	118.99			118.89	116.00	118.89	116.00
		20.00	19.00	19.97	15.00	15.00	13.00	13.02	13.00
19.05	19.00	23.50	20.07	25.50	24.00	26.00	24.00	24.00	23.00
1.60	1.53	1.60	1.50	1.75	1.35	1.50	1.35	1.41	1.30
45.00	39.90	51.05	42.01	51.00	45.00	48.05	43.50	50.00	45.50
320.00	320.00								
5.10	5.10	5.10	5.00	5.50	5.00	6.00	6.00	5.00	4.90
3.55	3.10	3.65	3.10	3.70	3.35	4.00	3.25	4.50	3.75
6.00	5.51	5.99	5.00	5.00	4.00	4.55	3.95	4.36	3.95
16.00	15.00	15.50	15.00	15.10	14.50	16.25	14.00	16.00	14.01
4.50	4.50	4.60	3.99	5.00	4.50				
3.05	2.60	2.85	2.35	3.90	2.60	3.50	2.60	2.75	2.30
300.05	260.00	320.00	300.00	350.00	300.00	300.00	300.00	299.00	280.00
1.95	1.53	2.29	1.82	2.00	1.86	2.00	1.82	1.97	1.80
1.55	1.55	1.80	1.80	2.60	1.81	2.30	2.00	2.50	2.11
13.00	12.00	15.00	12.20	15.00	12.35	13.30	12.91	14.00	12.91
13.50	12.90	15.20	13.10	16.00	14.90	15.61	14.50	14.01	13.10
31.99	23.86	37.50	26.00	37.00	34.90	35.50	32.20	36.00	33.00
13.50	13.50	12.51	12.51	13.10	12.51				
5.00	5.00	5.44	5.44			5.48	5.48		
2.30	1.98	1.80	1.78	1.78	1.73	1.60	1.40	2.43	1.60
4.60	4.00	5.75	4.30	5.20	4.60	5.20	4.77	5.49	4.91
10.65	10.65	12.15	9.50	10.00	8.50	8.50	8.10	9.75	8.50
14.00	12.96	17.35	13.15	19.00	16.00	16.50	15.10	16.40	15.58
16.07	14.09	20.00	15.81	18.95	17.00	18.00	16.70	18.00	16.81
15.99	13.51	15.01	13.80	16.00	15.01	15.10	14.01	16.00	14.20
2.40	2.10	2.20	2.00	2.15	1.75	2.40	1.95	2.20	1.99
				69.00	55.25				

Monthly High and Low Stock Prices

Monthly High / Low Stock Prices									
September		October		November		December		Year	
High	Low	High	Low	High	Low	High	Low	High	Low
1.58	1.50	1.50	1.30	1.30	1.10	1.21	1.14	2.05	1.10
0.40	0.36	0.39	0.35	0.44	0.36	0.40	0.36	0.65	0.35
3.50	2.80	3.00	2.50	3.09	2.05	4.69	2.99	5.00	2.05
3.99	3.40	4.00	3.40	4.00	3.40	4.00	3.68	5.00	3.20
44.89	41.35	43.55	42.00	44.30	38.76	39.00	35.00	52.00	35.00
0.04	0.04	0.04	0.04	0.06	0.03	0.10	0.07	0.10	0.03
4.40	3.50	3.87	3.70	4.25	3.31	4.00	3.31	4.50	3.31
118.89	118.00	118.89	117.00	117.95	117.95	117.95	117.94	122.00	116.00
13.00	12.50	12.76	12.75	12.90	12.75	12.90	12.70	20.00	12.50
26.00	26.00	26.50	26.01	30.00	26.50	28.01	26.00	30.00	19.00
1.45	1.45	1.45	1.20	1.20	1.10	1.29	1.14	1.84	1.10
46.35	41.50	43.00	38.00	42.00	36.00	41.50	40.00	51.05	36.00
				299.50	100.00			320.00	100.00
4.91	4.90			4.90	4.21	4.21	3.50	9.01	3.50
4.55	3.87	4.60	4.21	5.02	4.31	5.20	4.40	5.20	3.10
4.10	3.95	4.10	4.00	4.04	3.90	4.02	3.99	7.33	3.90
16.00	13.00	14.05	12.00	20.00	13.00	26.00	19.00	26.00	12.00
				6.70	5.00	5.05	5.00	6.70	3.99
2.32	2.30	2.31	1.90	2.03	1.91	3.30	2.30	4.80	1.90
300.00	280.00	280.00	250.00	260.00	250.01	260.00	240.00	450.00	240.00
2.00	1.61	1.90	1.58	2.00	1.65	1.99	1.70	2.35	1.53
1.91	1.91	1.98	1.91	1.90	1.77	1.90	1.80	2.60	1.45
						16.00	15.00	16.00	15.00
13.30	12.62	13.30	12.93	19.00	13.00	17.40	13.12	19.50	12.00
		60.00	60.00					60.00	60.00
13.51	13.12	14.30	13.22	21.50	14.00	21.00	17.80	21.50	12.00
35.00	32.00	33.50	31.00	39.00	32.00	38.50	33.00	40.00	23.00
12.51	12.51			20.00	17.50	19.99	19.99	20.00	12.51
		5.45	5.45			5.45	5.30	5.50	5.00
2.85	2.00	2.80	2.20	2.30	1.95	2.01	1.85	3.00	1.40
								260.00	260.00
5.80	4.92	6.59	5.10	7.50	6.10	7.45	6.51	7.50	4.00
9.50	7.51	10.00	8.50	14.98	8.50	16.00	9.00	20.50	7.51
16.75	15.51	17.50	15.11	25.00	17.60	26.00	16.00	26.00	12.00
18.15	16.50	19.10	17.20	23.00	17.71	21.50	18.00	23.00	14.00
16.25	15.40	15.50	15.00	19.00	15.10	19.00	18.00	19.00	13.00
2.24	2.00	2.20	2.00	2.20	1.87	2.02	1.90	3.30	1.72
57.00	57.00	72.00	72.00					72.00	55.25

Maximum and Minimum Monthly Indices for 2009

	JSE Index		JSE Composite Index		JSE Select	
	Maximum	Minimum	Maximum	Minimum	Maximum	Minimum
January	87,501.69	85,034.13	76,296.00	72,486.75	2,084.99	1,940.48
February	87,142.97	81,831.69	75,631.22	65,788.27	2,059.44	1,761.91
March	82,665.78	79,022.64	67,334.00	61,346.15	1,835.16	1,630.03
April	80,311.68	78,482.98	63,822.50	60,952.64	1,725.45	1,634.87
May	82,837.63	79,714.41	68,801.59	62,639.63	1,879.52	1,696.84
June	83,076.98	80,866.14	69,245.12	66,686.46	1,889.67	1,802.92
July	81,026.40	79,304.49	67,030.97	64,943.25	1,828.99	1,772.40
August	80,434.32	79,704.43	66,679.60	64,913.10	1,826.69	1,769.60
September	80,519.86	79,453.70	66,081.12	64,115.70	1,816.00	1,751.98
October	80,793.06	79,412.84	65,631.50	64,298.75	1,799.07	1,763.11
November	84,114.32	80,526.03	74,176.23	65,399.03	2,037.06	1,793.15
December	83,404.85	81,716.19	71,130.79	68,376.17	1,909.00	1,820.61

CORPORATE DATA

COMPANY	ISIN	SYMBOL CODE	DATE LISTED
ACCESS FINANCIAL SERVICES LIMITED	JMP004681012	AFS	October 30, 2009
BANK OF NOVA SCOTIA JA VARIABLE PREF.	JMP1574F1116	BNSJVP	May 1, 2007
BERGER PAINTS JAMAICA	JMP165551079	BRG	October 15, 1992
CABLE & WIRELESS JAMAICA	JMP192311026	CWJA	October 27, 1988
CAPITAL & CREDIT FINANCIAL GROUP	JMP2008L1047	CCFG	May 15, 2008
CAPITAL & CREDIT MERCHANT BANK VARIABLE PREF.	JMP200872043	CCMBVP	May 15, 2008
CARIBBEAN CEMENT COMPANY	JMP210961059	CCC	February 3, 1969
CARRERAS LIMITED	JMP213891048	CAR	February 3, 1969
CIBONEY GROUP	JMP283451095	CBNY	January 25, 1993
DESNOES & GEDDES	JMP350801032	DG	March 20, 1970
FIRSTCARIBBEAN INTERNATIONAL BANK		FCIB	November 1, 1994
FIRSTCARIBBEAN INTER. BANK JAMAICA		FCIBJ	September 29, 1988
FIRST JAMAICA INVESTMENTS LTD	JMP416651033	FJI	July 28, 1993
GLENER COMPANY	JMP4744S1045	GLNR	February 3, 1969
GRACEKENNEDY LTD.	JMP4897P1050	GK	September 11, 1986
GUARDIAN HOLDINGS LTD.		GHL	September 20, 2000
HARDWARE & LUMBER	JMP5032G1088	HL	February 3, 1969
JAMAICA BROILERS GROUP	JMP5892N1021	JBG	July 6, 1992
JAMAICA LIVESTOCK ASSOCIATION	JMP589341032	JLA7.5	January 3, 1972
JAMAICA MONEY MARKET BROKERS	JMP589381046	JMMB	January 2, 2003
JAMAICA MONEY MARKET BROKERS 12%	JMP589381129	JMMB12	January 14, 2008
JAMAICA MONEY MARKET BROKERS 12.15%	JMP589381202	JMMB12.15	April 1, 2008
JAMAICA MONEY MARKET BROKERS 12.25%	JMP589381384	JMMB12.25	January 14, 2008
JAMAICA PRODUCERS GROUP	JMP589351007	JP	February 3, 1969
JAMAICA PUBLIC SERVICE 5% C	JMP589361246	JPS5C	February 3, 1969
JAMAICA PUBLIC SERVICE 5% D	JMP589361246	JPS5D	February 3, 1969
JAMAICA PUBLIC SERVICE 6%	JMP589361329	JPS6	February 3, 1969
JAMAICA PUBLIC SERVICE 7%	JMP589361162	JPS7	February 3, 1969
JAMAICA STOCK EXCHANGE VARIABLE PREF.	JMPS91171047	JSEVP	June 30, 2008
KINGSTON PROPERTIES LIMITED	JMP607311090	KPREIT	August 5, 2008
KINGSTON WHARVES	JMP607321073	KW	September 26, 1995
LASCELLES DEMERCADO & CO.	JMP620921040	LAS	February 3, 1969
MAYBERRY INVESTMENTS LIMITED	JMP6464F1050	MIL	April 21, 2005
MAYBERRY INVESTMENTS LIMITED 12%	JMP6363F1134	MIL12	November 16, 2007
MONTEGO BAY ICE COMPANY	JMP693911035	MBICE	April 29, 1970
MONTEGO FREEPORT	JMP693931090	MFP	February 3, 1969
NATIONAL COMMERCIAL BANK JAMAICA	JMP710541031	NCBJ	December 5, 2000
NCB CAPITAL MARKETS LIMITED	JMP710501017	NCBCM11.75	September 22, 2006
PALACE AMUSEMENT	JMP744941080	PAL	July 12, 1973
PAN CARIBBEAN FINANCIAL SERVICES	JMP7490E1040	PCFS	February 3, 1987
PAN-JAMAICA INVESTMENT TRUST	JMP749981081	PJAM	February 4, 1969
PEGASUS HOTELS OF JAMAICA	JMP7654H1098	PEG	July 28, 1969
PULSE INVESTMENTS LIMITED	JMP792921018	PULS	June 9, 2006
RADIO JAMAICA	JMP798411055	RJR	January 16, 1992
SAGICOR LIFE JAMAICA	JMP826601040	SLJ	May 4, 1970
SALADA FOODS JAMAICA	JMP831721098	SALF	February 3, 1969
SCOTIA DBG INVESTMENTS	JMP853651074	SDBG	August 31, 1992
SCOTIA GROUP JAMAICA	JMP8537F1042	SGJ	May 1, 2007
SEPROD LIMITED	JMP8579T1037	SEP	January 9, 1986
SUPREME VENTURES	JMP8805B1082	SVL	February 28, 2006
TRINIDAD CEMENT LIMITED		TCL	March 8, 1999

*KPREIT - formerly known as CREIT (Carlton Savannah REIT (Jamaica) Limited
 Goodyear Jamaica Limited was delisted on July 20, 2009
 Sagicor Financial Corporation was delisted on September 16, 2009



PAN-JAMAICAN INVESTMENT TRUST LIMITED

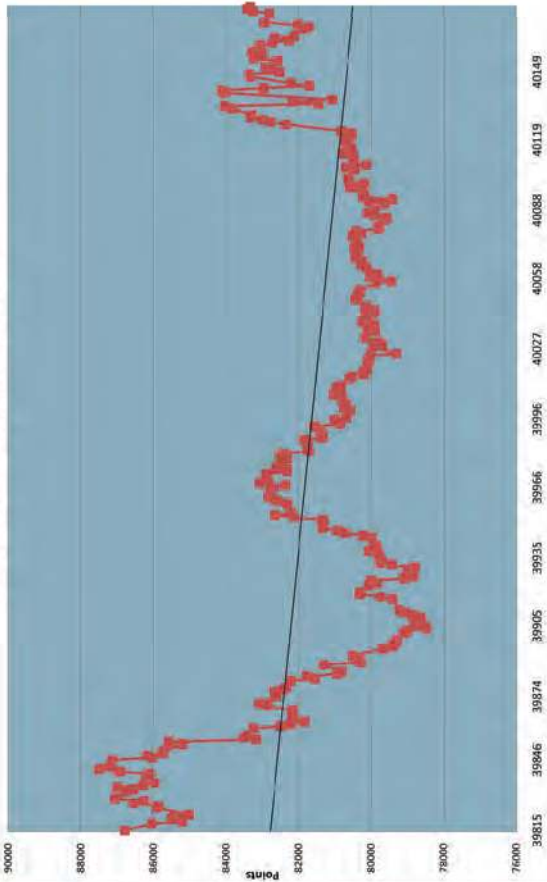
Investing in the development and growth of
diverse sectors throughout the
Jamaican economy

Pan-Jamaican expanded its presence in the manufacturing sector, in 2009, as the lead investor in the acquisition of the Walkerswood Group, along with Associated Manufacturers Ltd, producers of the Busha Browne and Jamaica Joe brands.



60 KNUTSFORD BOULEVARD, KINGSTON 5, JAMAICA
TELEPHONE: (876) 929-4510 • WEBSITE: www.panjam.com.jm

Daily JSE Index & Trendline (2009)



DIVIDEND PAYMENT FOR THE CALENDAR YEAR 2009

COMPANY	X Date	Record Date	Payment date	Amount (cents)
BANK OF NOVA SCOTIA JA VAR. PREFERENCE	26-May-09	28-May-09	30-Jun-09	<u>12.1300</u>
TOTAL				12.1300
CAPITAL & CREDIT MERCHANT BANK VAR. PREF	8-Apr-09	14-Apr-09	27-Apr-09	0.2200
	4-Nov-09	6-Nov-09	20-Nov-09	<u>0.1700</u>
TOTAL				0.3900
CARRERAS LIMITED	20-Feb-09	24-Feb-09	17-Mar-09	400.0000
	9-Jun-09	11-Jun-09	25-Jun-09	300.0000
	31-Jul-09	4-Aug-09	21-Aug-09	100.0000
	16-Nov-09	18-Nov-09	4-Dec-09	<u>100.0000</u>
TOTAL				900.0000
DESNOES & GEDDES	10-Jun-09	12-Jun-09	26-Jun-09	25.0000
	16-Dec-09	18-Dec-09	29-Dec-09	<u>15.0000</u>
TOTAL				40.0000
FIRSTCARIBBEAN INTERNATIONAL BANK	17-Dec-08	19-Dec-08	30-Jan-09	3.0000
	8-Jun-09	10-Jun-09	30-Jun-09	<u>3.0000</u>
TOTAL				6.0000
FIRSTCARIBBEAN INTERNATIONAL BANK JA	30-Sep-09	2-Oct-09	29-Oct-09	<u>40.0000</u>
TOTAL				40.0000
FIRST JAMAICA INVESTMENTS	9-Mar-09	11-Mar-09	27-Mar-09	20.0000
	2-Jun-09	4-Jun-09	19-Jun-09	25.0000
	1-Sep-09	3-Sep-09	18-Sep-09	25.0000
	24-Nov-09	26-Nov-09	11-Dec-09	30.0000
	24-Nov-09	26-Nov-09	11-Dec-09	<u>10.0000</u>
TOTAL				110.0000
GLEANER COMPANY	7-Apr-09	9-Apr-09	23-Apr-09	3.5000
	14-Dec-09	16-Dec-09	23-Dec-09	<u>2.0000</u>
TOTAL				5.5000
GRACEKENNEDY LTD.	30-Apr-09	4-May-09	26-May-09	50.0000
	25-Nov-09	27-Nov-09	18-Dec-09	<u>65.0000</u>
TOTAL				115.0000

DIVIDEND PAYMENT FOR THE CALENDAR YEAR 2009

COMPANY	X Date	Record Date	Payment date	Amount (cents)
GUARDIAN HOLDINGS LTD.	7-Apr-09	9-Apr-09	16-Apr-09	37.0000
	18-Aug-09	20-Aug-09	27-Aug-09	<u>11.0000</u>
TOTAL				48.0000
JAMAICA BROILERS GROUP	3-Apr-09	7-Apr-09	7-May-09	5.0000
	2-Jun-09	4-Jun-09	6-Jul-09	6.0000
	12-Oct-09	14-Oct-09	5-Nov-09	<u>8.0000</u>
TOTAL				19.0000
JAMAICA LIVESTOCK ASSOCIATION	27-Mar-09	31-Mar-09	23-Apr-09	3.5000
	9-Sep-09	11-Sep-09	5-Oct-09	<u>4.0000</u>
TOTAL				7.5000
JAMAICA MONEY MARKET BROKERS	11-Jun-09	15-Jun-09	30-Jun-09	6.0000
	27-Nov-09	1-Dec-09	21-Dec-09	<u>6.0000</u>
TOTAL				12.0000
JAMAICA MONEY MARKET BROKERS 12%	28-Jan-09	30-Jan-09	13-Feb-09	3.0000
	24-Feb-09	27-Feb-09	13-Mar-09	3.0000
	26-Mar-09	30-Mar-09	14-Apr-09	3.0000
	28-Apr-09	30-Apr-09	14-May-09	3.0000
	27-May-09	29-May-09	12-Jun-09	3.0000
	26-Jun-09	30-Jun-09	14-Jul-09	3.0000
	28-Jul-09	30-Jul-09	14-Aug-09	3.0000
	26-Aug-09	28-Aug-09	14-Sep-09	3.0000
	28-Sep-09	30-Sep-09	14-Oct-09	3.0000
	28-Oct-09	30-Oct-09	13-Nov-09	3.0000
	26-Nov-09	30-Nov-09	14-Dec-09	<u>3.0000</u>
TOTAL				33.0000
JAMAICA MONEY MARKET BROKERS 12.15%	28-Jan-09	30-Jan-09	13-Feb-09	3.5438
	28-Apr-09	30-Apr-09	14-May-09	3.5438
	28-Jul-09	30-Jul-09	14-Aug-09	3.5438
	28-Oct-09	30-Oct-09	13-Nov-09	<u>3.5438</u>
TOTAL				14.17502

DIVIDEND PAYMENT FOR THE CALENDAR YEAR 2009

COMPANY	X Date	Record Date	Payment date	Amount (cents)
JAMAICA MONEY MARKET BROKERS 12.25%	28-Jan-09	30-Jan-09	13-Feb-09	3.0115
	24-Feb-09	27-Feb-09	13-Mar-09	3.0115
	26-Mar-09	30-Mar-09	14-Apr-09	3.0115
	28-Apr-09	30-Apr-09	14-May-09	3.0115
	27-May-09	29-May-09	12-Jun-09	3.0115
	26-Jun-09	30-Jun-09	14-Jul-09	3.0115
	28-Jul-09	30-Jul-09	14-Aug-09	3.0115
	26-Aug-09	28-Aug-09	14-Sep-09	3.0115
	28-Sep-09	30-Sep-09	14-Oct-09	3.0115
	28-Oct-09	30-Oct-09	13-Nov-09	3.0115
	26-Nov-09	30-Nov-09	14-Dec-09	<u>3.0115</u>
	TOTAL			33.12605
JAMAICA PUBLIC SERVICE 5% C	11-Mar-09	13-Mar-09	1-Apr-09	2.5000
	11-Jun-09	15-Jun-09	1-Jul-09	2.5000
	11-Sep-09	15-Sep-09	1-Oct-09	2.5000
	11-Dec-09	15-Dec-09	31-Dec-09	<u>2.5000</u>
	TOTAL			10.0000
JAMAICA PUBLIC SERVICE 5% D	11-Mar-09	13-Mar-09	1-Apr-09	2.5000
	11-Jun-09	15-Jun-09	1-Jul-09	2.5000
	11-Sep-09	15-Sep-09	1-Oct-09	2.5000
	11-Dec-09	15-Dec-09	31-Dec-09	<u>2.5000</u>
	TOTAL			10.0000
JAMAICA PUBLIC SERVICE 6%	11-Mar-09	13-Mar-09	1-Apr-09	3.0000
	11-Jun-09	15-Jun-09	1-Jul-09	3.0000
	11-Sep-09	15-Sep-09	1-Oct-09	3.0000
	11-Dec-09	15-Dec-09	31-Dec-09	<u>3.0000</u>
	TOTAL			12.0000
JAMAICA PUBLIC SERVICE 7%	11-Mar-09	13-Mar-09	1-Apr-09	3.5000
	11-Jun-09	15-Jun-09	1-Jul-09	3.5000
	11-Sep-09	15-Sep-09	1-Oct-09	3.5000
	11-Dec-09	15-Dec-09	31-Dec-09	<u>3.5000</u>
	TOTAL			14.0000
JAMAICA STOCK EXCHANGE VAR. PREF.	24-Feb-09	27-Feb-09	3-Mar-09	10.6000
	27-May-09	29-May-09	3-Jun-09	10.8400
	27-Aug-09	31-Aug-09	3-Sep-09	10.8400
	2-Dec-09	4-Dec-09	8-Dec-09	<u>10.7200</u>
	TOTAL			43.0000

DIVIDEND PAYMENT FOR THE CALENDAR YEAR 2009

COMPANY	X Date	Record Date	Payment date	Amount (cents)
KINGSTON PROPERTIES LIMITED	27-May-09	29-May-09	11-Jun-09	0.0400
	2-Dec-09	4-Dec-09	16-Dec-09	<u>0.1200</u>
TOTAL				0.1600
KINGSTON WHARVES	8-Jan-09	12-Jan-09	23-Jan-09	<u>2.0000</u>
TOTAL				2.0000
LASCELLES deMERCADO & CO.	24-Jun-09	26-Jun-09	30-Jun-09	<u>1400.0000</u>
TOTAL				1400.0000
MAYBERRY INVESTMENTS LTD.	8-Apr-09	14-Apr-09	16-Apr-09	<u>8.0000</u>
TOTAL				8.0000
MAYBERRY INVESTMENTS LTD. 12%	19-Jan-09	21-Jan-09	23-Jan-09	3.0000
	18-Feb-09	20-Feb-09	24-Feb-09	3.0000
	19-Mar-09	23-Mar-09	25-Mar-09	3.0000
	20-Apr-09	22-Apr-09	24-Apr-09	3.0000
	18-May-09	20-May-09	22-May-09	2.8000
	18-Jun-09	22-Jun-09	24-Jun-09	3.3000
	20-Jul-09	22-Jul-09	24-Jul-09	3.0000
	18-Aug-09	20-Aug-09	24-Aug-09	3.1000
	21-Sep-09	23-Sep-09	25-Sep-09	3.2000
	16-Oct-09	21-Oct-09	23-Oct-09	2.8000
	18-Nov-09	20-Nov-09	25-Nov-09	3.0000
	18-Dec-09	22-Dec-09	24-Dec-09	<u>3.2000</u>
TOTAL				36.4000
NATIONAL COMMERCIAL BANK	4-Feb-09	6-Feb-09	19-Feb-09	28.0000
	6-May-09	8-May-09	21-May-09	10.0000
	5-Aug-09	10-Aug-09	24-Aug-09	10.0000
	18-Nov-09	20-Nov-09	3-Dec-09	<u>89.0000</u>
TOTAL				137.0000
NCB CAPITAL MARKETS 11.75%	20-Jan-09	22-Jan-09	27-Jan-09	17.6250
	7-Jul-09	9-Jul-09	27-Jul-09	<u>17.6250</u>
TOTAL				35.2500
PAN CARIBBEAN FINANCIAL SERVICES	17-Mar-09	19-Mar-09	30-Mar-09	65.0000
	14-Sep-09	16-Sep-09	29-Sep-09	<u>60.0000</u>
TOTAL				125.0000

DIVIDEND PAYMENT FOR THE CALENDAR YEAR 2009

COMPANY	X Date	Record Date	Payment date	Amount (cents)
PAN CARIBBEAN FINANCIAL SERVICES 12.5%	5-Mar-09	9-Mar-09	17-Mar-09	615.0000
	5-Jun-09	9-Jun-09	17-Jun-09	630.0000
	7-Sep-09	9-Sep-09	17-Sep-09	630.0000
	7-Dec-09	9-Dec-09	17-Dec-09	<u>623.0000</u>
TOTAL				2498.0000
PAN-JAMAICAN INVESTMENT TRUST	9-Mar-09	11-Mar-09	31-Mar-09	25.0000
	2-Jun-09	4-Jun-09	30-Jun-09	30.0000
	1-Sep-09	3-Sep-09	25-Sep-09	30.0000
	24-Nov-09	26-Nov-09	18-Dec-09	35.0000
	24-Nov-09	26-Nov-09	18-Dec-09	<u>16.0000</u>
TOTAL				136.0000
PEGASUS HOTELS	6-Apr-09	8-Apr-09	22-Apr-09	10.0000
	16-Dec-09	18-Dec-09	23-Dec-09	<u>25.0000</u>
TOTAL				35.0000
RADIO JAMAICA	9-Nov-09	11-Nov-09	19-Nov-00	<u>5.0000</u>
TOTAL				5.0000
SALADA FOODS	27-Nov-09	1-Dec-09	14-Dec-09	<u>30.0000</u>
TOTAL				30.0000
SAGICOR FINANCIAL CORPORATION	8-Apr-09	14-Apr-09	15-May-09	2.0000
	11-Sep-09	15-Sep-09	15-Oct-09	<u>2.0000</u>
TOTAL				4.0000
SAGICOR LIFE JAMAICA	12-Mar-09	16-Mar-09	31-Mar-09	25.0000
	16-Sep-09	18-Sep-09	29-Sep-09	<u>32.0000</u>
TOTAL				57.0000
SCOTIA DBG INVESTMENTS	15-Dec-08	17-Dec-08	12-Jan-09	27.5000
	12-Mar-09	16-Mar-09	6-Apr-09	30.0000
	26-May-09	28-May-09	30-Jun-09	30.0000
	14-Sep-09	16-Sep-09	8-Oct-09	<u>30.0000</u>
TOTAL				117.5000

DIVIDEND PAYMENT FOR THE CALENDAR YEAR 2009

COMPANY	X Date	Record Date	Payment date	Amount (cents)
SCOTIA GROUP JAMAICA	15-Dec-08	17-Dec-08	12-Jan-09	34.0000
	12-Mar-09	16-Mar-09	6-Apr-09	34.0000
	26-May-09	28-May-09	30-Jun-09	34.0000
	14-Sep-09	16-Sep-09	8-Oct-09	<u>34.0000</u>
TOTAL				136.0000
SEPROD	23-Mar-09	25-Mar-09	8-Apr-09	45.0000
	16-Oct-09	21-Oct-09	4-Nov-09	<u>20.0000</u>
TOTAL				65.0000
SUPREME VENTURES LIMITED	9-Apr-09	15-Apr-09	6-May-09	10.0000
	9-Apr-09	15-Apr-09	6-May-09	3.0000
	12-Nov-09	16-Nov-09	11-Dec-09	<u>9.0000</u>
TOTAL				22.0000

* quoted in Trinidad & Tobago dollars (TT\$)

" quoted in United States dollars (US\$)



Average Daily Volume, Value and Trades

Month	Trading Days in a Month	Average No. of Transactions	Average Volume	Average Value
JANUARY	21	64	5,364,532	\$25,110,638.08
FEBRUARY	19	78	2,475,700	\$19,400,975.47
MARCH	22	70	21,337,462	\$54,088,799.44
APRIL	20	56	4,083,193	\$35,354,699.82
MAY	20	56	4,287,693	\$22,521,508.54
JUNE	22	53	1,071,194	\$9,119,185.40
JULY	23	61	2,814,737	\$21,985,681.89
AUGUST	20	66	6,013,047	\$59,911,146.51
SEPTEMBER	22	58	7,000,763	\$38,089,909.21
OCTOBER	21	55	1,741,320	\$11,460,980.91
NOVEMBER	21	75	15,203,758	\$158,394,675.80
DECEMBER	22	70	6,690,613	\$89,158,922.70
ANNUAL DAILY		63	6,569,796	\$45,511,377.37

Number of Trades per Company (Monthly)*

	Jan	Feb	Mar	Apr	May	Jun	Jul	Aug	Sep	Oct	Nov	Dec	Year
Berger Paints	8	11	16	12	3	5	5	8	10	4	12	15	109
Cable & Wireless (Jamaica)	59	95	67	50	44	33	41	48	42	36	46	36	597
Capital & Credit Financial Group	32	22	37	4	39	12	12	15	38	28	25	86	350
Caribbean Cement Company	36	33	30	15	29	49	41	37	30	33	32	26	391
Carlton Savannah (REIT) Jamaica	1	2	0	1	7	4	0	0	0	0	4	3	22
Carreras Limited	64	92	117	89	63	53	99	53	78	57	102	124	991
Ciboney Group	6	3	3	2	3	4	0	3	1	1	3	5	34
Desnoes & Geddes	21	46	37	25	39	28	33	14	31	31	68	67	440
First Caribbean International Bank	5	0	10	6	1	0	13	2	2	6	1	2	48
First Caribbean International Bank Ja	0	1	0	0	8	6	6	3	8	3	4	7	46
First Jamaica Investments Limited	11	5	27	12	8	7	10	13	2	6	13	11	125
Gleaner Company	27	27	12	9	21	23	9	12	11	20	23	15	209
Goodyear Jamaica Ltd	0	0	0	0	0	0	0	0	0	0	0	0	0
GraceKennedy Ltd	78	59	58	59	51	89	120	83	80	70	77	82	906
Guardian Holdings Ltd.	0	0	0	1	0	0	0	0	0	0	5	0	6
Hardware & Lumber Ltd	1	7	6	1	2	2	1	4	3	0	3	6	36
Jamaica Broilers Group	72	106	76	105	68	67	104	109	113	102	125	131	1178
Jamaica Money Market Brokers	75	57	49	27	23	51	50	55	28	30	52	29	526
Jamaica Producers Group	17	17	37	8	10	18	21	27	21	25	37	33	271
Kingston Wharves	15	19	21	19	9	17	17	27	26	26	14	29	239
Lascelles de Mercado & Co.	16	19	7	14	4	14	5	4	11	7	8	5	114
Mayberry Investments Limited	51	72	85	48	47	39	47	31	46	36	58	40	600
Montego Freeport Ltd.	17	28	22	1	1	22	19	9	5	4	11	5	144
Montego Bay Ice	1	0	0	0	0	0	0	0	0	0	0	2	3
National Commercial Bank Ltd.	168	212	162	161	152	125	113	226	117	104	214	211	1965
Palace Amusement Ltd	0	2	0	0	0	0	0	0	0	1	0	0	3
Pan Caribbean Financial Services	15	17	27	9	12	13	26	22	15	16	35	16	223
Pan Jamaican Investment Trust	52	39	65	44	48	28	26	52	48	40	69	60	571
Pegasus Hotels	1	2	0	1	1	6	0	0	3	0	11	1	26
Pulse Investments Ltd.	3	1	0	2	1	0	1	0	0	2	0	3	13
Radio Jamaica	15	17	18	12	4	11	9	10	16	8	25	16	161
Sagicor Financial Corporation	1	0	0	0	0	0	0	0	0	0	0	0	1

Sagior Life Jamaica	86	61	99	95	86	90	77	96	62	81	126	108	1067
Salada Foods Jamaica	15	12	19	1	5	5	6	6	3	10	11	19	112
Scotia DBG Investments	79	36	57	27	14	50	46	38	63	28	52	68	558
Scotia Group Jamaica	184	227	232	194	223	194	307	201	232	241	198	229	2662
Seprum Limited	10	32	13	14	7	10	43	26	27	11	19	19	231
Supreme Ventures Ltd.	35	23	53	18	34	41	33	21	42	21	31	15	367
Trinidad Cement Ltd.	0	0	0	0	0	3	0	0	1	1	0	0	5
BNSJVP	14	9	20	8	25	18	32	23	31	20	17	21	238
CCMBVP	0	7	5	3	2	0	2	2	4	3	4	31	63
CWJA5.5%	0	0	0	0	0	0	0	0	0	0	0	0	0
CWJA6%	0	0	0	0	0	0	0	0	0	0	1	0	1
J.L.A7.5%	0	0	0	0	4	4	4	1	0	0	2	0	15
JMMB 12%	10	2	0	0	0	5	1	4	0	1	1	6	30
JMMB 12.15%	0	0	0	0	0	0	0	2	0	0	0	0	2
JMMB 12.25%	26	30	30	11	11	10	12	10	13	18	12	14	197
J.P.S.5% C	0	0	0	0	0	0	0	0	0	0	0	0	0
J.P.S.5% D	0	0	0	0	0	0	0	0	0	0	1	0	1
J.P.S.6%	0	0	0	0	0	0	0	0	0	0	0	0	0
J.P.S.7%	0	0	0	0	0	0	0	0	0	0	0	0	0
JSEVP	2	4	4	10	0	4	9	1	5	2	1	6	48
Mayberry Investments Limited 12%	2	9	7	2	5	3	6	8	8	7	4	4	65
NCBOM11.75%	5	11	10	3	4	4	5	16	7	5	13	2	85
PCFS 12.5%	0	0	0	0	0	0	1	0	3	0	0	0	4
Total	1,336	1,474	1,538	1,123	1,118	1,167	1,412	1,322	1,286	1,145	1,570	1,608	16,099

*Block transactions included

Carlton Savamah REIT (Jamaica) Ltd was renamed Kingston Properties Limited on October 29, 2009
Goodyear Jamaica Limited was delisted on July 20, 2009
Sagior Financial Corporation was delisted on September 16, 2009

TURNING IDEAS INTO INVESTMENT OPPORTUNITIES



■ INITIAL PUBLIC
OFFERINGS

■ CORPORATE ADVISORY
SERVICES

■ PRIVATE
PLACEMENTS

MAYBERRY ²⁵
ANNIVERSARY

Our office is located at:
1 1/2 Oxford Road,
Kingston 5, Jamaica

Contact Us by phone:
General & Sales inquiries
(876) 929 1908 - 9
Fax: (876) 929 1501

Contact Us by E-mail:
Sales inquiries -
sales@mayberryinv.com

Website:
www.mayberryinv.com

TRANSFORMING LIVES POSITIVELY... *through lasting relationships*

2009 Top Twenty Price Appreciation

Winners

Losers

Company	%	Open	Close	Company	%	Open	Close
Ciboney Group	100.00%	0.05	0.10	Hardware & Lumber	(65.00%)	10.00	3.50
Jamaica Broilers Group	55.00%	3.20	4.96	Jamaica Money Market Brokers	(45.58%)	7.35	4.00
Pan Caribbean Financial Services	50.83%	12.00	18.10	Berger Paints (Jamaica)	(40.00%)	2.00	1.20
Pan Jamaican Investment Trust	44.00%	25.00	36.00	First Caribbean Intl Bank Jamaica	(39.52%)	21.00	12.70
Sagicor Life Jamaica	25.36%	5.60	7.02	Kingston Wharves	(35.83%)	4.80	3.08
Montego Freeport	22.58%	1.55	1.90	Lascelles, deMercado & Co	(34.73%)	383.00	250.00
Salada Foods Jamaica	19.23%	13.00	15.50	Radio Jamaica	(33.00%)	3.00	2.01
First Caribbean International Bank	17.94%	100.00	117.94	Gleaner Company	(32.95%)	1.73	1.16
Pegasus Hotel	17.59%	17.00	19.99	Cable & Wireless (Jamaica)	(24.00%)	0.50	0.38
Jamaica Producers Group	12.57%	23.00	25.89	Mobay Ice Company	(21.65%)	20.00	15.67
First Jamaica Investments	11.88%	25.00	27.97	Supreme Ventures	(19.60%)	2.50	2.01
Scotia Group Jamaica	11.83%	17.50	19.57	Capital & Credit Financial Group	(16.48%)	5.28	4.41
Scotia DBG Investments	10.80%	15.00	16.62	Desnoes & Geddes	(15.56%)	4.05	3.42
Kingston Properties Limited	7.53%	4.65	5.00	National Commercial Bank Jamaica	(15.11%)	18.00	16.00
Pulse Investments	4.62%	5.20	5.44	Trinidad Cement Limited	(11.11%)	80.00	72.00
Caribbean Cement Company	1.27%	3.95	4.00	GraceKennedy Limited	(10.00%)	43.50	40.50
Seprod Limited	1.12%	17.80	18.00	Guardian Holdings Limited	(6.90%)	320.00	299.50
Carreras Limited	0.06%	35.00	35.02	Palace Amusement	(6.41%)	61.00	60.00
				Mayberry Investments Limited	(1.64%)	2.00	1.99
					(0.50%)		

REGULATORY & MARKET OVERSIGHT DIVISION

A Division of the Jamaica Stock Exchange



SAFEGUARDING MARKET INTEGRITY

Ensuring:-

- Listed Company Compliance
- Member-dealer Regulation
- Market Surveillance
- Enforcement
- Dispute Resolution/Arbitration
- Risk Assessment

40 Harbour Street, Kingston

Tel: (876) 967 3271-4

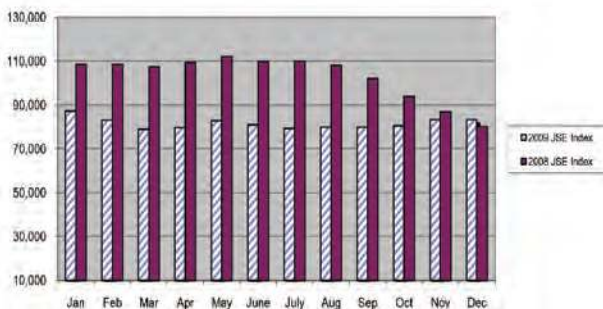
Toll Free: 1-888-429-5678

Fax: (876) 967 3275

website: www.jamstockex.com

email: rmod@jamstockex.com

Month End JSE Index 2008 / 2009



Months	2009 JSE Index	2008 JSE Index
Jan	87,206.90	108,493.70
Feb	83,091.44	108,463.94
Mar	79,022.64	107,439.31
Apr	79,742.37	109,353.87
May	82,837.63	112,127.89
June	80,866.14	109,754.01
July	79,304.49	109,903.53
Aug	79,883.87	108,044.77
Sep	79,928.03	102,018.87
Oct	80,567.52	93,750.90
Nov	83,322.40	86,864.24
Dec	83,321.96	80,152.03



Attractive returns, low risk SOUNDS GOOD



A flexible 'repo' for your investing style.

Call 1-888-4WEALTH

for a private consultation with a Wealth Advisor.

FLEXIBLE

Choose your investment period

ATTRACTIVE

Interest Rates

AVAILABLE IN

ALL USDC, GBP & Euro

ACCESS YOUR SJ FUNDS*

*All authorized investments are USDC, GBP & Euro



JCSD TRUSTEE SERVICES LIMITED

THE COMPANY

JCSDTS was incorporated in July 2008 as a wholly owned subsidiary of the Jamaica Central Securities Depository (JCSD). Both companies share a common Board of Directors, comprised of experienced and knowledgeable players in the financial services industry. JCSD is itself a wholly owned subsidiary of the Jamaica Stock Exchange (JSE).

OUR SERVICES

Trustee services are a logical extension to existing lines of JCSD's business and are ably supported and complemented by the JCSD's other established divisions. The Registrar Services Division has over 4 years' experience and administrative abilities in the maintenance of efficient computer-based registers. The Depository Operation Division has effectively managed electronic sharebooks, pledge facilities and mandate instructions with a zero-loss record for over 10 years.

MAJOR SERVICES

- Administration of Funds under Trust
- Monitoring of Invested Trust Assets
- Maintenance of Accounting Records in respect of Funds
- Collecting and recording of Income on Trust Assets
- Filing of Income Tax Returns
- Safekeeping facilities for Securities
- Provide monthly reports on Trust Activities
- Collateral Agent and Collecting Agent for Guaranteed Note Issues.

We are not however limited by the abovementioned services as our powers and responsibilities are based on the terms of our Trust Deed Agreement with the client.

CUSTOMER PROFILE

The Trustee Services have targeted various customers which include:-

- Listed Companies
- Brokers
- Institutional Investors
- Investing Public
- Financial Institutions
- Government & Statutory corporations

MANAGEMENT PROFILE

With a strong cadre of experienced managers and directors, the JCS DTS is confident of being able to provide an efficient and reliable trustee service. Key Personnel include:

- ***Robin Levy BSc., MBA, CFE JCSD and JCS DTS General Manager:*** Mr. Levy has enjoyed an over 20-year career in audit, risk management and financial services having worked with such firms as PriceWaterhouse, the IBM consulting Group, the Jamaica Observer and the Jamaica Co-operative Credit Union League before joining the JSE as its current Deputy General Manager. Mr. Levy also serves on the National Payments Council, the National Export Council and was recently appointed Chairman of the Jamaica Urban Transit Company.
- ***Josephine Lewis BSc., MBA JCS DTS' Trustee Services Manager:*** Ms. Lewis has worked in the field of auditing, accounting and treasury management in a career that has spanned almost 30 years to date. She has worked with companies such as Price Waterhouse, the Victoria Mutual Group, Scotia Bank, and City of Kingston Credit Union before joining the JSE.
- ***Michelle Sirdar JCSD's Registrar Services Manager:*** Ms. Sirdar has over 20 years experience in the financial services industry. Before joining the JSE, Ms. Sirdar worked with firms such as Mutual Security Trust & Merchant Bank and Trustee Company, Buck Security Brokers and Alpha Financial Services (now VM Wealth Management).
- ***JCS DTS' Board of Directors:*** Mr. Curtis Martin (Chairman, CCFG President); Mr. Christopher Berry (Mayberry Investments CEO); Mr. Alvaro Casserly (Company Director); Mr. Livingston Morrison (BOJ Deputy Governor); Mrs. Marlene Street Forrest (JSE General Manager) and Ms. Janet Wallace (Director at Ministry of Finance & Planning).

FEE STRUCTURE

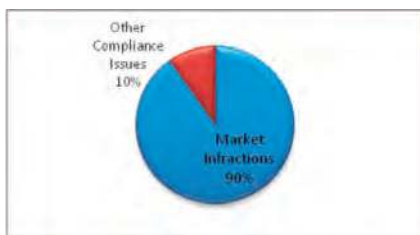
- Competitive and negotiable
- Varies with size of Asset being managed and the number of accounts.

Jamaica Stock Exchange's Regulatory & Market Oversight Division 2009 Market Oversight Report

In 2009 the Jamaica Stock Exchange's Regulatory & Market Oversight Division (RMOD) addressed 123 issues in accordance with its market surveillance, compliance and enforcement responsibilities. This was 43% above the 2008 mark. The RMOD attributes the growth in issues to its redefined and intensified focus in discharging its market oversight functions. Specific activities that have contributed to the performance include keener financial statement assessments, closer monitoring of trading activities and closer scrutiny of market disclosures. The Division's tools and operations are frequently reviewed, enhanced and strengthened, and therefore would have contributed to the improved oversight operations and better performances over earlier years. For the calendar year 2009, 95% of the cases were closed and the remainder were carried forward to 2010. In 2009, brought forward cases amounted to 6%. A summary of the RMOD's oversight activities in 2009 is presented in the diagram below.

Nature of Infraction 1

Nature of Infraction	Number
Market Infractions	111
Other Compliance Issues	12
Total	123



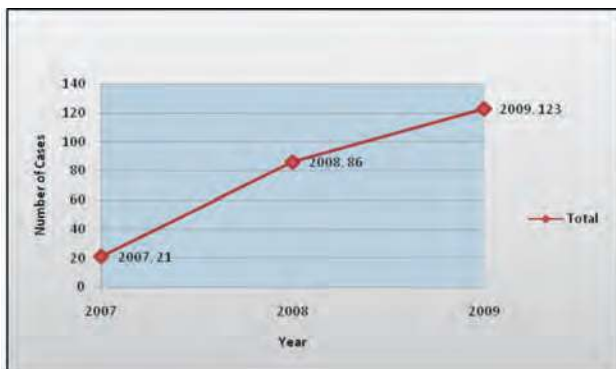
Market Infraction Distribution 2

Trends and Other Activities

The RMOD commenced operations on April 1, 2008, and prior to its formation the Market Operations and Trading Department undertook elements of market oversight. With the Jamaica Stock Exchange completing its demutualization process in November 2007, the Company's Board ceded its regulatory responsibilities to the Regulatory and Market Oversight Committee (RMOC), which is comprised of only Independent Directors of the JSE's Board. The RMOD, which is headed by Mr. Wentworth Graham, Chief Regulatory Officer, provides operational support to the RMOC whose Chairman is Mr. Livingstone Morrison.

Since undertaking market oversight responsibilities there has been a steady climb in the number of regulatory issues identified and assessed. In 2007 total cases amounted to 21 and by 2008 it was 86; 2009 ended with 123 cases. The trend of cases is represented in Diagram 3 below.

Diagram 3 - Total Number of Regulatory Issues 2007-2009



Other significant activities within the RMOD in 2009 include:

1. Developing new rules, namely: Management Discussion & Analysis, Complaint Management System Guidelines, the Regulatory and Market Oversight Committee and Disciplinary Proceedings.
2. Creating a Logo and Tagline for the Division, developing the RMOD's Newsletter and implementing an Automated Market Surveillance System for the Exchange;
3. Undertaking member-dealers' standard and special inspections; and streamlining their reporting requirements to fully satisfy market requirements.

Support and Looking Ahead

The JSE's regulatory advancements would not have been possible without guidance and support from the Regulatory and Market Oversight Committee (RMOC). A special note is necessary for the first RMOC Chairman, Ms. Hilary Philips QC, who relinquished her post in June 2009 having been appointed an Appellate Judge of Jamaica's Appeal Court. Justice Philips worked tirelessly and with devotion to establish the framework of the RMOC and RMOD and the baton has been passed to Chairman Livingstone Morrison, who is keen on reinforcing the

institutional framework of the JSE's regulatory operations. Ms. Nicole Lambert replaced Justice Philips as the Bar Association of Jamaica's representative, and in this capacity also serves as an Independent Director of the JSE. The Exchange's regulatory affairs were also advanced due to support from entities such as the Companies Office of Jamaica, the Institute of Chartered Accountants of Jamaica, international organizations and most importantly the team of officers within the RMOD, as well as the wider Exchange.

In 2010, the RMOD's area of focus will centre on advancing its institutional structure by strengthening its operational capacity and creating stronger association with support entities both locally and overseas. Additionally, there will be a concerted drive to advance public awareness of the RMOD's affairs. In closing, it is safe to say that 2010 will have new challenges and by all accounts, the JSE's regulatory activities will have to continue to resolve them effectively. In this regard, the RMOD will be guided by the maxim: "Act, Learn and Refine" as it stays focused in fulfilling its general purpose of market regulation and oversight for the Jamaica Stock Exchange.


**JAMAICA
STOCK
EXCHANGE**

JSE JUNIOR MARKET



Now Open For Business
Listing: Start Up, Small & Medium Sized Companies

40 Harbour Street, Kingston. Tel: 976-3271-4 Fax: 922-6966 Email: info-jse@jamstockex.com Website: www.jse.com.jm

Main Market

LISTING FEES AND TRADING CHARGES

Listing Fees - Effective January 1, 2010

PAR/MARKET CAPITAL	INITIAL/ANNUAL LISTING FEE (Effective 2010)	SUPPLEMENTARY FEE (Effective 2010)
Under 40m	\$70,421	\$14,084
Over \$40m - \$90m	\$140,842	\$21,126
Over \$90m - \$150m	\$176,052	\$26,407
Over \$150m - \$250m	\$211,264	\$31,689
Over \$250m - \$500m	\$352,107	\$52,816
Over \$500m - \$1.5b	\$492,948	\$70,421
Over \$1.5b - \$3.0b	\$633,792	\$70,421
Over \$3.0b - \$4.0b	\$915,478	\$70,421
Over \$4.0b - \$7.0b	\$1,056,321	\$70,421
Over \$7.0b	\$1,408,428	\$70,421

Charges for the listing of a company's securities comprise an initial fee, an annual fee and a supplementary fee. These fees are in accordance with the scales set out by the Exchange from time to time.

(i) **Initial Fee**

The initial fee, which is based on total ***issued share capital value*** of each new listing of securities not already listed, must accompany each Application for Listing. The minimum charge is \$70,421.

(ii) **Annual Fee**

Calculation of annual fees is payable based on the ***average market value at month-end for the previous twelve-month or shorter period*** (where applicable), of all classes of a company's securities which are the subject of listing. The minimum charge for Annual Fee is \$70,421.

The Annual Fee becomes due on January 1 each year, following the calendar year of listing and must be forwarded to reach the Exchange within fourteen (14) days of that date.

Revised December 2009

Junior Market

LISTING FEES AND TRADING CHARGES

Listing Fees - Effective January 1, 2010

STATED CAPITAL /MARKET CAPITALIZATION	INITIAL FEE/ANNUAL FEE (Effective January 2010)	SUPPLEMENTARY FEE (Effective January 2010)
\$40m	\$35,210	\$7,042
Over \$40m - \$90m	\$70,421	\$10,563
Over \$90m - \$150m	\$88,027	\$13,203
Over \$150m - \$250m	\$105,632	\$15,844
Over 250m - \$500m	\$176,053	\$26,408

Charges for the listing of a company's securities comprise an initial fee, an annual fee and a supplementary fee. These fees are in accordance with the scales set out by the Exchange from time to time.

(i) **Initial Fee**

The initial fee, which is based on total **stated capital** of each new listing of securities not already listed, must accompany each Application for Listing. The minimum charge is \$35,210.

(ii) **Annual Fee**

Calculation of annual fees is payable based on the **average market value (market capitalization) at month-end for the previous twelve-month or shorter period** (where applicable), of all classes of a company's securities which are the subject of listing. The minimum charge for Annual Fee is \$35,210.

The Annual Fee becomes due on January 1 each year, following the calendar year of listing and must be forwarded to reach the Exchange within fourteen (14) days of that date.

Revised January 2010



We have seen many changes over the years but our guiding principles remain - **Service, Commitment, Performance.** That's the Lascelles, deMercado Group for you.

Major Local Trading Subsidiaries:

- J. Wray & Nephew Limited • New Yarmouth Limited
- Newton Cane Farms Limited
- Lascelles Limited, with its divisions
 - Lascelles Merchandise
 - Lascelles Laboratories
 - Federated Pharmaceutical
 - Ag-Chem
 - Lascelles Wines & Spirits
- Globe Insurance Company of Jamaica Limited
- Kingston Industrial Garage Limited • John Crook Limited
- Cars & Commercial Limited • Henriques Brothers Limited
- AJAS Limited • Transportation Agencies Limited

Overseas Wholly Owned Subsidiaries

- Globe Holdings Limited
- J. Wray & Nephew (U.K.) Limited
- J. Wray y Sobrino de Costa Rica, S. A.
- Rum Company (New Zealand) Limited
- Timco Limited • Turks Islands Importers Limited
- Twickenham Insurance Company Limited
- Wray & Nephew (Canada) Limited
- Wray & Nephew Global Brands Limited
- JWN International Limited

Lascelles, deMercado & Co., Ltd.
 Lascelles deMercado Building, 23 Dominica Drive,
 Kingston 5, Tel# 926-9007/9



List of Stock Brokers

BARITA INVESTMENTS LTD.

15 St. Lucia Way,
Kingston 5
Phone: 926-2681-2 / 926-2686
Fax: 929-8432
e-mail: barita@cwjamaica.com

M/VL STOCKBROKERS LTD.

2-6 Grenada Crescent,
Kingston 5
Phone: 960-1570 / 926-4319
Fax: 960-1571
e-mail: mvl@wtjam.net

SCOTIA DBG INVESTMENTS LTD.

7 Holborn Road,
Kingston 10
Phone: 960-6699 / 968-3365
Fax: 960-3984
e-mail: info@scotiadbg.com

NCB CAPITAL MARKETS LTD.

32 Trafalgar Road, 3rd Floor
Kingston 10
Phone: 960-7108 Fax: 960-7649
TOLL FREE: 1-888-4-WEALTH
e-mail: info@ncbcapitaimarkets.com

JMMB SECURITIES LTD.

11 Knutsford Boulevard,
Kingston 5
Phone: 920-5039 / 920-4720
Fax: 960-8106
e-mail: info@jmbbsecurities.com

STOCKS AND SECURITIES LTD.

24-26 Grenada Crescent,
Kingston 5
Phone: 929-3261 / 929-3400
Fax: 929-4825
e-mail: info@gostocksandsecurities.com

**FIRST GLOBAL FINANCIAL
SERVICES LTD.**

2 St. Lucia Avenue,
Kingston 5
Phone: 926-1275
Fax: 926-1279 / 929-6436
e-mail: fgfs@gkco.com

**VICTORIA MUTUAL WEALTH
MANAGEMENT LTD.**

52 - 60 Grenada Crescent,
Kingston 5
Phone: 960-5000 - 3
Fax: 960-4972
e-mail: spaimer@vmbs.com

MAYBERRY INVESTMENTS LTD.

1 ½ Oxford Road,
Kingston 5
Phone: 929-1908-9
Fax: 929-1501 / 920-2103
e-mail: feedback@mayberryinv.com

CAPITAL & CREDIT SECURITIES LTD.

18 Trafalgar Road,
Kingston 10
Phone: 946-1770
Fax: 978-8005
e-mail: info@capital-credit.com

**PAN CARIBBEAN FINANCIAL
SERVICES LTD.**

60 Knutsford Boulevard,
Kingston 5
Phone: 929-5583/4
Fax: 926-0555
e-mail: options@gopancaribbean.com

The advertisement features a central image of a family—a man, a woman, and a young girl—enjoying a meal. The woman is pouring juice from a large bottle into a glass. In the foreground, several bottles of NJOY juice are displayed, including Mango-Cashi Pine, Orange Juice, and Fruit Punch. A large, stylized 'NJOY' logo with a sunburst is prominently placed over the family scene. The text 'Tropical Juice Medley' is written in a cursive font across the middle. The bottom of the ad is a dark blue banner containing contact information and a small logo.

Serge ISLAND

NJOY
THE BEST

Tropical Juice Medley

Made by **Serge ISLAND**

A Member of the Seprod Group of Companies

Corporate Office
3 Felix Fox Blvd., Kingston, Jamaica
Tel: (876) 922-1220-9
Manufacturing Plant
Seaford, St. Thomas, Tel: (876) 700-5344-5

Website: www.seprod.com Email: corporate@seprod.com

made by **Serge** must be good

Index To Advertisers

Carib Cement	17
Ernst & Young	Inside Front Cover
First Global	11
GraceKennedy	2
JSE e-Learning	Inside back cover
JSE Junior Market	63
JSE	50
Ideal Portfolio	37
Lascelles deMercado	66
Mayberry	54
NCB Capital Market	58
Pan Jamaica Investments Trust Ltd	43
RMOD	56
Sagicor	Back Cover
Seprod Ltd.	68
Supreme Venture Limited.....	23
Trinidad Cement	33



Jamaica Stock Exchange e-Learning Campus

Get on top of your game.

Join the Jamaica Stock Exchange e-campus
and earn your diploma in securities management.

WHY JSE'S E-LEARNING CAMPUS?

- RELEVANT COURSES FOR THE FINANCIAL SERVICES SECTOR
- 24-HOUR ACCESS TO COURSES
- ON-LINE LIBRARY AND EASILY ACCESSIBLE DATABASES
- CONVENIENT AND FLEXIBLE PROGRAMS
- EXPERIENCED AND RECOGNIZED LOCAL AND INTERNATIONAL LECTURERS
- EXPOSURE TO INTERNATIONAL BEST PRACTICES STANDARDS
- PRACTICAL, HANDS-ON HELP

COURSE UNITS:

- GLOBAL CAPITAL MARKETS AND FINANCIAL TOOLS
- UNDERSTANDING AND INTERPRETING JAMAICA'S FINANCIAL REGULATIONS AND LAW
- CREDIT RISK MANAGEMENT: LOANS AND BONDS
- FOUNDATION COURSES: Secondary Markets, Debt and money markets and the equities markets.
- TREASURY MANAGEMENT: ORGANIZATION AND SYSTEMS
- FINANCIAL PLANNING AND WEALTH MANAGEMENT
- COMPLIANCE, ETHICS AND CORPORATE GOVERNANCE
- STRATEGIC PORTFOLIO MANAGEMENT
- MARKET RISK AND BACK OFFICE MANAGEMENT
- CORPORATE STRUCTURE AND PROCEDURES
- MERGERS, ACQUISITIONS AND PRIVATIZATIONS
- MASTERING FINANCIAL NEGOTIATIONS
- INTERNATIONAL BOND AND DEBT ISSUES

Call to register at the: e-Learning Secretariat

40 Harbour Street, Kingston Tel: 876-967-3271 or 876-502-5537 Fax: 876-924-9090

Website address: www.jamstockex.com Email: jseecampus@jamstockex.com



"LIFE IS A SUM
OF ALL YOUR
CHOICES."



Everyone is different, so everyone will have different needs.

INDIVIDUAL LIFE & HEALTH

Choose from a full range of solutions designed to suit your every need.

GROUP HEALTH & LIFE

Select from a wide range of corporate benefit programmes designed to meet the needs of employees across Jamaica.

PENSIONS

Secure your future through defined benefit or defined contribution pension solutions or approved pension schemes.

INVESTMENTS

Decide on your financial goals and we will help you to achieve them through a selection of flexible investment vehicles.

MORTGAGES

Fulfill your residential and commercial property needs with attractive mortgage rates.

RETIREMENT PLANNING

Embrace a bright and secure future with retirement solutions tailored for every stage of your life.

REAL ESTATE SERVICES

Satisfy all your real estate needs with premiere property management: rental, sales and management.

Together we create the solutions to suit your needs.

Call a **Sagicor Advisor** today.



Wise Financial Thinking for Life

Sagicor Life Jamaica Limited
H.O.: 28-48 Barbados Ave., Kgn 5
Tel.: (876) 929-8920-9
Toll Free: 1-888-SAGICOR
Website: www.sagicorja.com

LIFE & HEALTH • INSURANCE • PENSIONS • INVESTMENTS • MORTGAGES • RETIREMENT PLANNING • REAL ESTATE SERVICES
Jamaica, Barbados, Guyana, Trinidad & Tobago and all other countries.